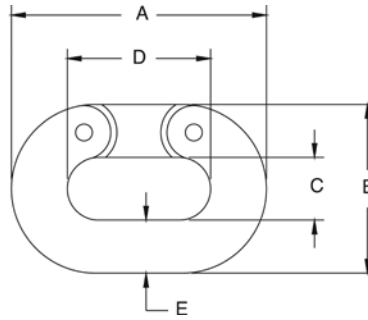


Connecting Links



Standard Features

- Drop-forged carbon steel, heat-treated, hot-dipped galvanized finish

Part Number/Price

Part#	A	B	C	D	E	Safe Load*	Price					
17794	1.50 in	38.1 mm	1.00 in	25.4 mm	0.43 in	10.9 mm	0.87 in	22.1 mm	0.25 in	6.4 mm	1,325 lb (601.6 kg)	Consult
17795	2.06 in	52.3 mm	1.37 in	34.8 mm	0.56 in	14.2 mm	1.12 in	28.5 mm	0.37 in	9.4 mm	2,750 lb (1,247.4 kg)	Consult
17796	2.65 in	67.3 mm	1.71 in	43.4 mm	0.65 in	16.5 mm	1.46 in	37.1 mm	0.50 in	12.7 mm	4,750 lb (2,154.6 kg)	Consult
17797	3.31 in	84.1 mm	2.09 in	53.1 mm	0.78 in	19.8 mm	1.81 in	46.0 mm	0.62 in	15.8 mm	7,250 lb (3,288.6 kg)	Consult
17798	3.87 in	98.3 mm	2.50 in	63.5 mm	0.93 in	23.6 mm	2.12 in	53.9 mm	0.75 in	19.1 mm	10,250 lb (4,649.3 kg)	Consult
17799	5.00 in	127.0 mm	3.31 in	84.1 mm	1.25 in	31.8 mm	2.75 in	69.9 mm	1.00 in	25.4 mm	15,500 lb (7,030.7 kg)	Consult

*Do not exceed the safe load

Load Cell Isolators



Standard Features

- Power surges, such as those caused by welding or electrical shorts, frequently damage load cells and indicators. To prevent such damage, load cell isolators electrically separate the mechanical assembly from its tension-type load cell.

Part Number/Price

Part#	Height Thread Size	Max. Dia	Safe Load*	Price			
17722	3/8-16 UNC	2.50 in	63.5 mm	2.50 in	63.5 mm	600 lb (272.2 kg)	Consult
17724	1/2-13 UNC	2.50 in	63.5 mm	2.50 in	63.5 mm	600 lb (272.2 kg)	Consult
17726	1/2-20 UNF	2.50 in	63.5 mm	2.50 in	63.5 mm	600 lb (272.2 kg)	Consult
17725	1/2-13 UNC	2.43 in	61.7 mm	2.00 in	50.8 mm	3,000 lb (1,360.8 kg)	Consult
17723	3/8-24 UNF	2.50 in	63.5 mm	2.50 in	63.5 mm	600 lb (272.2 kg)	Consult
17728	1/2-13 UNC x 1/2-20 UNF	2.50 in	63.5 mm	2.50 in	63.5 mm	600 lb (272.2 kg)	Consult
17732	1/4-20 UNC	1.00 in	25.4 mm	1.12 in	28.4 mm	250 lb (113.4 kg)	Consult

*Do not exceed the safe load