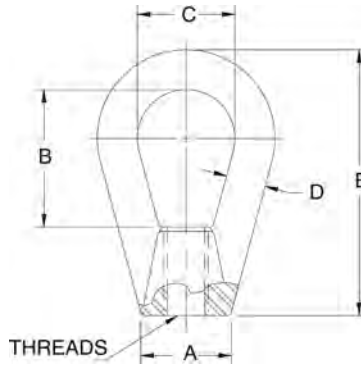


Eye Nuts



Standard Features

- Drop-forged steel, tapped NC right-hand threads

Part Number/Price

Part #	A	B	C	D	E	Thread Size	Safe Load*	Price					
17772	0.50 in	12.7 mm	1.06 in	26.9 mm	0.75 in	19.1 mm	0.25 in	6.4 mm	1.68 in	42.7 mm	1/4-20UNC	500 lb (226.8 kg)	Consult
17773	0.75 in	19.1 mm	1.18 in	30.0 mm	0.87 in	22.1 mm	0.31 in	7.9 mm	2.25 in	57.2 mm	3/8-16UNC	1,800 lb (816.5 kg)	Consult
17774	1.00 in	25.4 mm	1.56 in	39.6 mm	1.12 in	28.5 mm	0.43 in	10.9 mm	3.00 in	76.2 mm	1/2-13UNC	3,600 lb (1,632.9 kg)	Consult
17775	1.25 in	31.8 mm	1.93 in	49.0 mm	1.37 in	34.8 mm	0.56 in	14.2 mm	3.75 in	95.3 mm	5/8-11 UNC	5,800 lb (2,630.8 kg)	Consult

*Do not exceed the safe load

Coupling Nuts



Standard Features

- Heavy hex

Part Number/Price

Part #	Thread Size	Length	Flat	Safe Load*	Price		
14638	1/4-20 UNC	1.75 in	44.5 mm	0.44 in	11.2 mm	500 lb (226.8 kg)	Consult
14650	3/8-16 UNC	1.75 in	44.5 mm	0.62 in	15.8 mm	1,500 lb (680.4 kg)	Consult
14663	1/2-13 UNC	1.75 in	44.5 mm	0.87 in	22.1 mm	3,000 lb (1,360.8 kg)	Consult
14681	5/8-11 UNC	2.12 in	53.8 mm	1.06 in	26.9 mm	7,500 lb (3,402.0 kg)	Consult
14691	3/4-10 UNC	2.25 in	57.1 mm	1.25 in	31.8 mm	10,000 lb (4,535.9 kg)	Consult

*Do not exceed the safe load

Important: Read "Load Cell Mounting Hardware Safety Guidelines" at the beginning of this section.