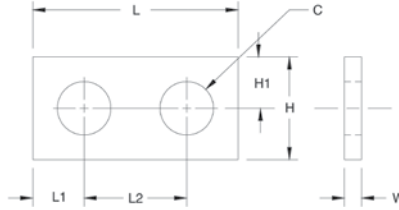
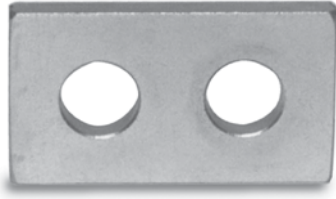


Load Cell Spacers



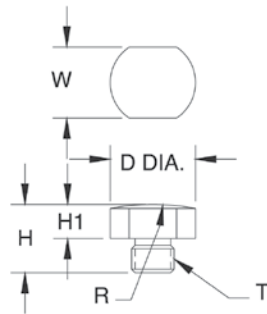
Standard Features

- Use with most popular single-ended beams
- Provides flat mounting surface required for optimum load cell performance
- Zinc-plated mild steel or stainless steel

Part Number/Price

Part#	C	H	H1	L	L1	L2	W	Price
Mild Steel								
17754	0.53 in	13.4 mm	1.25 in	31.8 mm	0.62 in	15.7 mm	2.25 in	57.2 mm
17755	0.78 in	19.8 mm	1.50 in	38.1 mm	0.75 in	19.1 mm	3.00 in	76.2 mm
17756	1.03 in	26.2 mm	2.00 in	50.8 mm	1.00 in	25.4 mm	4.00 in	101.6 mm
18260	0.53 in	13.4 mm	1.25 in	31.8 mm	0.62 in	15.7 mm	2.25 in	57.2 mm
Stainless Steel								
17757	0.78 in	19.8 mm	1.50 in	38.1 mm	0.75 in	19.1 mm	3.00 in	76.2 mm
18383	0.53 in	13.4 mm	1.25 in	31.8 mm	0.62 in	15.7 mm	2.25 in	57.2 mm
18411	0.53 in	13.4 mm	1.25 in	31.8 mm	0.62 in	15.7 mm	2.25 in	57.2 mm

Load Button



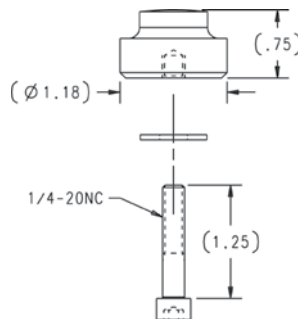
Standard Features

- Suitable for use with compression mounting assemblies, canisters, s-beams and single-ended beams
- Hardened alloy steel

Part Number/Price

Part#	T	D	H	H1	R	W	Price
17750	3/8-24UNF	0.75 in	19.1 mm	0.60 in	15.2 mm	0.30 in	7.6 mm
17751	1/2-20UNF	0.75 in	19.1 mm	0.70 in	17.8 mm	0.30 in	7.6 mm
17752	3/4-16UNF	1.50 in	38.1 mm	0.90 in	22.9 mm	0.30 in	7.6 mm

Load Button Insert Kit



Standard Features

- To be used with RLSSB and RTI SSB load cells (1,000-5,000 lb)
- Hardened alloy steel

Part Number/Price

Part#	Description	Price
26112	Load button insert kit	Consult