

# Ball Bearings



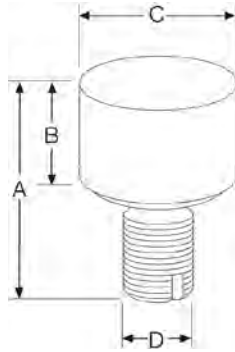
## Standard Features

- Use with load cup and load receiver to build a custom scale
- 52100 chrome alloy steel

## Part Number/Price

Part #	Drawing Dimensions	Price
18815	5/8 in diameter crush strength 32,000 lb	Consult
18816	7/8 in diameter crush strength 59,000 lb	Consult
65841	1.25 in diameter crush strength 100,000 lb	Consult

# Load Cups



## Standard Features

- Ball and cup load introduction provides point loading for maximum accuracy
- For use with most popular single-ended beam load cells
- Constructed of 440C

## Part Number/Price

Part #	A		B		C		D	Price
31911	1.70 in	43.2 mm	0.54 in	13.7 mm	1.07 in	27.2 mm	1/2-20 UNF	Consult
33654	1.12 in	28.4 mm	0.54 in	13.7 mm	0.78 in	19.8 mm	1/2-20 UNF	Consult
33653	1.50 in	38.1 mm	0.80 in	20.3 mm	1.12 in	28.4 mm	3/4-16 UNF	Consult
33652	2.00 in	50.8 mm	0.85 in	21.6 mm	1.75 in	44.5 mm	1-12 UNF	Consult
33651	2.85 in	72.4 mm	0.85 in	21.6 mm	1.75 in	44.5 mm	1-12 UNF	Consult
33650	2.85 in	72.4 mm	0.85 in	21.6 mm	1.75 in	44.5 mm	1-14 UNF	Consult
33647	2.75 in	69.9 mm	0.50 in	12.7 mm	0.75 in	19.1 mm	1/2-20 UNF	Consult
72364	1.78 in	45.2 mm	0.53 in	13.4 mm	0.78 in	19.8 mm	1/2-20 UNF	Consult
69431	Replacement cup for Cardinal® SCA-50,000 load cell							Consult