

# RL30002 Thru Hole

Alloy Steel, Environmentally Sealed, NTEP Certified 1:5,000 III L Class III Multiple Cell, IP67



## Dimensions

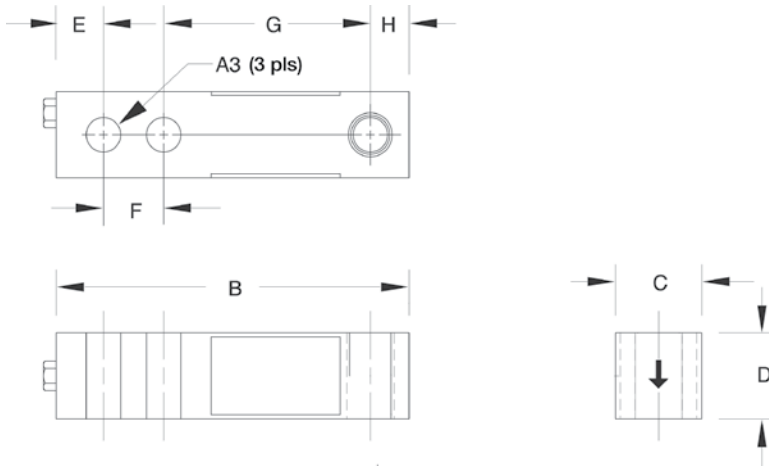
Picture is a representation of actual product

Rated Capacity	A3*	B	C	D	E	F	G	H
1,000-5,000 SE**	0.53	5.12	1.25	1.25	0.62	1.00	3.00	0.50
453.6-2,268.0 SE**	13.5	130.1	31.8	31.8	15.8	25.4	76.2	12.7

## Order Information

Load Rating	Part #	Est. Weight	Price
<b>NTEP Certified</b>			
1,000 lb	21521	3 lb	Consult
2,000 lb	21522	3 lb	Consult
2,500 lb	21523	3 lb	Consult
4,000 lb	21524	3 lb	Consult
5,000 lb SE*	21525	3 lb	Consult
<b>Conduit Adapter Kit (must be factory installed to maintain warranty)</b>			
3/8-24 nipple	31533	1 lb	Consult
3/8-24 to 1/4-18 NPT	31534	1 lb	Consult

\* Dimension A1 is identical to A3 on the RL30002 thru-hole model  
 \*\* SE refers to small envelope



## Interchangeable Products

VPG TEDEA-HUNTLEIGH®

**3410**..... —

ARTECH®

**30210**..... —

## Specifications

### Full Scale Output:

3.0 mV/V

### Bridge Resistance:

350 ohm, nominal

### Material/Finish:

High-alloy steel, nickel plated

### Temperature:

Compensated range: 14° F to 104° F/-10° C to 40° C  
 Operating range: -40° F to 150° F/-40° C to 65° C

### Seal Type:

Environmentally sealed, IP67

### Safe Overload:

150% full scale

### Safe Sideload:

100% full scale

### Rated Excitation:

5-10 VDC (15 V maximum)

### Nonlinearity:

0.03% full scale

### Hysteresis:

0.02% full scale

### Insulation Resistance:

5,000 megohms

### Deflection at Capacity:

1,000 lb=0.013 in (0.33 mm)  
 2,000 lb to 3,000 lb=0.015 in (0.38 mm)  
 4,000 lb to 5,000 lb=0.025 in (0.64 mm)

### Cable Length:

20 ft (6.1 m)

### Cable Diameter:

200 polyurethane jacket

### Cable Color Code:

Red ..... + Excitation  
 Black..... - Excitation  
 Green ..... + Signal  
 White ..... - Signal

### Warranty:

Two-year limited warranty

### Approvals:

