

RL35082

Stainless Steel, Welded Seal, NTEP Certified 1:5,000 Class III Multiple Cell, Welded Seal, IP67/IP69K

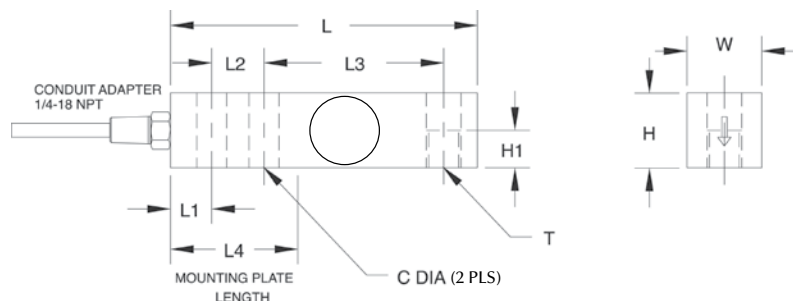
**Dimensions***Picture is a representation of actual product*

Rated Capacity	C	H	H1	L	L1	L2	L3	L4	T	W
lb/in										
1,000-4,000	0.53	1.22	0.61	5.12	0.62	1.00	3.00	2.25	1/2-20 UNF	1.22
5,000-10,000	0.78	1.50	0.75	6.75	0.75	1.50	3.75	3.00	3/4-16 UNF	1.50
kg/mm										
453.6-1,814.4	13.5	31.0	15.5	130.0	15.7	25.4	76.2	57.2	1/2-20 UNF	31.0
2,268.0-4,535.9	19.8	38.1	19.1	171.5	19.1	38.1	95.3	76.2	3/4-16 UNF	38.1

Order Information

Load Rating		Part#	Est. Weight	Price
RL35082 N5/IP67 Model 20 ft				
1,000 lb	453.6 kg	31283	3 lb	Consult
2,500 lb	1,134.0 kg	31282	3 lb	Consult
4,000 lb	1,814.4 kg	31281	3 lb	Consult
5,000 lb	2,268.0 kg	31280	5 lb	Consult
10,000 lb	4,535.9 kg	31279	5 lb	Consult
RL35082HE N5/IP69K Model 20 ft				
1,000 lb	453.6 kg	34702	3 lb	Consult
2,500 lb	1,134.0 kg	34703	3 lb	Consult
4,000 lb	1,814.4 kg	34704	3 lb	Consult
5,000 lb	2,268.0 kg	34705	5 lb	Consult
10,000 lb	4,535.9 kg	34706	5 lb	Consult
RL35082HE* N5/IP69K Model 30 ft				
1,000 lb	453.6 kg	173854	3 lb	Consult
2,500 lb	1,134.0 kg	173856	3 lb	Consult
4,000 lb	1,814.4 kg	173857	3 lb	Consult
5,000 lb	2,268.0 kg	173858	5 lb	Consult
10,000 lb	4,535.9 kg	173859	5 lb	Consult

*Conduit is recommended for maximum protection against the ingress of water and moisture through the cable entry

**Interchangeable Products**

VPG SENSORTRONICS®

65083S..... page 323**Weigh Module Available**

RICE LAKE WEIGHING SYSTEMS

RL50210 TA..... page 52

RICE LAKE WEIGHING SYSTEMS

RL1800 Series..... page 62**Specifications****Full Scale Output:**

2.0 mV/V

Output Resistance:

349-355 ohm

Input Resistance:

343-357 ohm

Material/Finish:

Stainless steel

Temperature:Compensated range
14°F to 104°F/-10°C to 40°C
Operating range
-40°F to 150°F/-40°C to 65°C**Safe Overload:**

150% full scale

Safe Sideload:

100% full scale

Rated Excitation:

5-10 VDC (15 V maximum)

Combined Error:

0.02% full scale

Non-Repeatability:

0.01% full scale

Insulation Resistance:

5,000 megohms

Deflection at Capacity:1,000 lb-4,000 lb = 0.012 in (0.33 mm)
5,000 lb-10,000 lb = 0.030 in (0.81 mm)**Seal Type:**

Welded seal, IP67*/IP69K

Cable Length:

30 ft (9.1 m); 20 ft (6.1 m)

Cable Diameter:

0.220 PTFE coated cable

Conduit Adapter Size:IP67 1/4-18 NPT
IP69K 1/2-14 NPT**Cable Color Code:**Red+ Excitation
Black- Excitation
Green+ Signal
White- Signal**Warranty:**

Two-year limited warranty

Approvals: