

RL39123

Stainless Steel, Environmentally Sealed, IP67



Dimensions

Picture is a representation of actual product

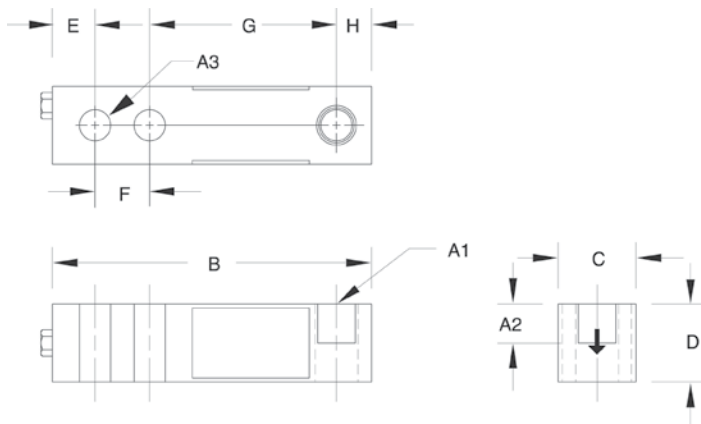
Rated Capacity	A1	A2	A3	B	C	D	E	F	G	H
lb/in										
250-4,000	1/2-20 UNF	0.60	0.53	5.12	1.25	1.25	0.62	1.00	3.00	0.50
5,000-10,000	3/4-16 UNF	0.75	0.78	6.75	1.50	1.50	0.75	1.50	3.75	0.75
kg/mm										
113.4-1,814.4	1/2-20 UNF	15.2	13.5	130.1	31.8	31.8	15.8	25.4	76.2	12.7
2,268.0-4,535.9	3/4-16 UNF	19.1	19.8	171.5	38.1	38.1	19.1	38.1	95.3	19.1

Order Information

Load Rating		Part #	Est. Weight	Price
250 lb	113.4 kg	17386	3 lb	Consult
500 lb	226.8 kg	17387	3 lb	Consult
1,000 lb	453.6 kg	17189	3 lb	Consult
2,500 lb	1,134.0 kg	17191	3 lb	Consult
4,000 lb	1,814.4 kg	17193	3 lb	Consult
4,000 lb	1,814.4 kg	95562**	3 lb	Consult
5,000 lb	2,268.0 kg	17194	5 lb	Consult
10,000 lb	4,535.9 kg	17195	5 lb	Consult

Conduit Adapter Kit (must be factory installed to maintain warranty)				
3/8-24 nipple		31533*	1 lb	Consult
3/8-24 to 1/4-18 NPT		31534*	1 lb	Consult

* PN 31533 and PN 31534 must be installed together to form the Conduit Adapter Kit
 ** PN 95562 comes with 30ft of cable



Interchangeable Products

- VPG REVERE®
9123 page 283
- ARTECH®
SS30310 —

Weigh Module Available

- RICE LAKE WEIGHING SYSTEMS
RL50210 TA page 52
- RICE LAKE WEIGHING SYSTEMS
RL1800 Series page 62

Specifications

- Full Scale Output:**
3.0 mV/V
- Output Resistance:**
349-355 ohm
- Input Resistance:**
343-357 ohm
- Material/Finish:**
Stainless steel
- Temperature:**
Operating range: -40° F to 150° F / -40° C to 65° C
- Seal Type:**
Environmentally sealed, IP67
- Safe Overload:**
150% full scale
- Safe Sideload:**
100% full scale
- Rated Excitation:**
5-10 VDC (15 V maximum)
- Nonlinearity:**
0.03% full scale
- Hysteresis:**
0.02% full scale
- Insulation Resistance:**
5,000 megohms
- Deflection at Capacity:**
 250 lb-1,000 lb=0.013 in (0.33 mm)
 2,000 lb-3,000 lb=0.015 in (0.38 mm)
 4,000 lb-5,000 lb=0.025 in (0.64 mm)
 10,000 lb=0.32 in (0.81 mm)
- Cable Length:**
20 ft (6.1 m)
- Cable Diameter:**
0.200 polyurethane jacket
- Cable Color Code:**
 Red + Excitation
 Black - Excitation
 Green + Signal
 White - Signal
- Warranty:**
Two-year limited warranty
- Approvals:**

