

DOUBLE-ENDED BEAM

# RL75016SS

Stainless Steel, Environmentally Sealed, IP67



## Dimensions

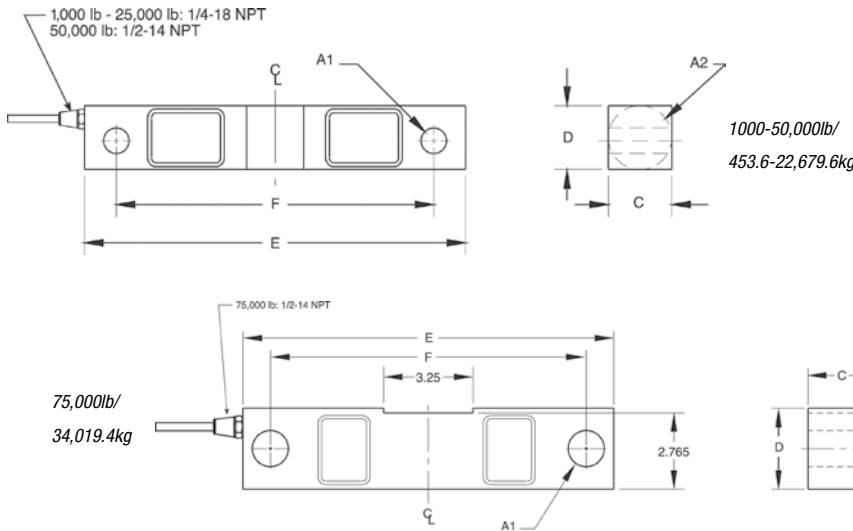
Picture is a representation of actual product

Rated Capacity	A1	A2	C	D	E	F
<b>lb/in</b>						
1,000-5,000	0.50	1.25	1.25	1.25	7.50	6.25
10,000-25,000	0.81	1.99	1.44	1.94	8.75	7.50
50,000	1.31	3.00	2.44	2.94	13.50	11.50
75,000	1.31	—	2.44	2.94	13.50	11.50
<b>kg/mm</b>						
453.6-2,268.0	12.7	31.8	31.8	31.8	190.5	158.8
4,535.9-11,339.8	20.6	50.8	36.6	49.3	222.3	190.5
22,679.6	33.3	76.2	62.0	74.7	342.9	292.1
34,019.4	33.3	—	62.0	74.7	342.9	292.1

## Order Information

Load Rating		Part #	Est. Weight	Price
1,000 lb	453.6 kg	17301	4 lb	Consult
1,500 lb	680.4 kg	17303	4 lb	Consult
2,000 lb	907.2 kg	17305	4 lb	Consult
2,500 lb	1,134.0 kg	17307	4 lb	Consult
5,000 lb	2,268.0 kg	17310	4 lb	Consult
10,000 lb	4,535.9 kg	17312	7 lb	Consult
15,000 lb	6,803.9 kg	17314	7 lb	Consult
20,000 lb	9,071.9 kg	17316	7 lb	Consult
25,000 lb	11,334.8 kg	17318	7 lb	Consult
50,000 lb	22,679.6 kg	17320	25 lb	Consult
75,000 lb*	34,019.4 kg	25356	27 lb	Consult

\*75,000 lb capacity has a square center



## Interchangeable Products

- RICE LAKE WEIGHING SYSTEMS  
**RL75016WHE\*** ..... page 160
  - VPG SENSORTRONICS®  
**65016W** ..... page 329
  - VPG SENSORTRONICS  
**65016WH\*** ..... page 330
  - VPG REVERE®  
**9203** ..... —
  - VPG CELTRON®  
**DSR-HSS** ..... page 221
- \*Hermetically sealed

## Weigh Module Available

- RICE LAKE WEIGHING SYSTEMS  
**RL1600 Series** page 90 and page 92

## Specifications

- Full Scale Output:**  
3.0 mV/V
- Output Resistance:**  
700 (± 5) ohm
- Input Resistance:**  
770 (± 10) ohm
- Material/Finish:**  
Stainless steel
- Temperature:**  
Operating range -40° F to 150° F / -40° C to 65° C
- Safe Overload:**  
150% full scale
- Safe Sideload:**  
100% full scale
- Rated Excitation:**  
5-10 VDC (15 V maximum)
- Nonlinearity:**  
0.07% full scale
- Hysteresis:**  
0.02% full scale
- Cable Diameter:**  
1,000 lb-25,000 lb=0.200 polyurethane jacket  
50,000 lb-75,000 lb=0.305 polyurethane jacket
- Deflection at Capacity:**  
1,000 lb-3,000 lb=0.01 in (0.3 mm)  
5,000 lb=0.015 in (0.4 mm)  
10,000 lb-20,000 lb=0.022 in (0.6 mm)  
25,000 lb=0.036 in (0.9 mm)  
50,000 lb=0.052 in (1.3 mm)  
75,000 lb=0.07 in (1.8 mm)
- Insulation Resistance:**  
5,000 megohms
- Seal Type:**  
Environmentally sealed, IP67
- Cable Length:**  
25 ft (7.6 m)
- Cable Color Code:**  
Red ..... + Excitation  
Black ..... - Excitation  
Green ..... + Signal  
White ..... - Signal
- Warranty:**  
Two-year limited warranty
- Approvals:**

