

Interchangeable Products

VPG CELTRON®
LCD page 229

Specifications

Full Scale Output:

4.0 mV/V

Output Resistance:

350 (± 3) ohm (5,000 lb-50,000 lb)
700 (± 5) ohm (100,000 lb)

Input Resistance:

385 (± 5) ohm (5,000 lb-50,000 lb)
770 (± 70) ohm (100,000 lb)

Material/Finish:

High-alloy steel, nickel plated

Temperature:

Operating range
-40° F to 150° F / -40° C to 65° C

Safe Overload:

150% full scale

Safe Sideload:

100% full scale

Rated Excitation:

15 VDC (15 V maximum)

Nonlinearity:

0.05% full scale

Hysteresis:

0.02% full scale

Insulation Resistance:

2,000 megohms

Seal Type:

Environmentally sealed, IP67

Cable Length:

50 ft (15.2 m)

Cable Diameter:

0.200 polyurethane jacket (5,000 lb-25,000 lb)
0.305 polyurethane jacket (50,000 lb-100,000 lb)

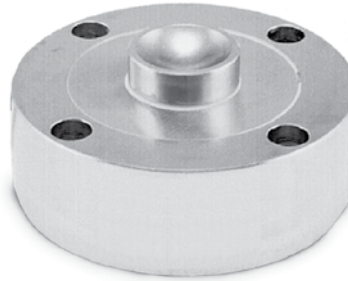
Cable Color Code:

Red+ Excitation
Black- Excitation
Green+ Signal
White- Signal

Warranty:

Two-year limited warranty

Approvals:



25K shown



5K shown

Load cup sold separately on 5,000 and 10,000 lb models.

Dimensions

Picture is a representation of actual product

Rated Capacity	T	R	D	D1	D2	H	H1	H2	T1	T2	
lb/in											
5,000*-10,000*	5/8-18 UNF-3B	—	4.12	1.26	3.50	1.37	0.12	—	0.28	0.406 x 0.283 DP	
25,000-50,000	—	—	0.875	4.75	1.53	4.00	2.12	0.50	0.30	0.34	0.508 x 0.38 DP
100,000	—	—	0.875	5.50	1.98	4.60	2.25	0.25	0.30	0.41	0.626 x 0.4 DP
kg/mm											
2,268.0*-4,539.9*	5/8-18 UNF-3B	—	104.6	32.0	88.9	34.8	3.05	7.6	7.2	10.3 x 7.2 DP	
11,339.8-22,679.7	—	—	22.2	120.7	38.9	101.6	53.8	12.7	7.6	8.7	12.9 x 9.7 DP
45,359.4	—	—	22.2	139.7	50.4	116.8	57.2	6.4	7.6	10.3	10.3 x 10.2 DP

Order Information

Load Rating	Part#	Est. Weight	Price
5,000 lb*	33061	6 lb	Consult
10,000 lb*	33062	6 lb	Consult
25,000 lb	33063	9 lb	Consult
50,000 lb	33064	9 lb	Consult
100,000 lb	33065	13 lb	Consult
Load Cup**	33616		Consult

*5,000 lb and 10,000 lb models can be used in compression and tension load applications.

**Load cup, PN 33616, is required for compression applications on 5,000 lb and 10,000 lb capacity load cells.

