

ROCKER COLUMN

RLSCA-50K

Stainless Steel, Welded Seal, NTEP Certified 1:10,000 Class IIIL Multiple Cell, IP67



Dimensions

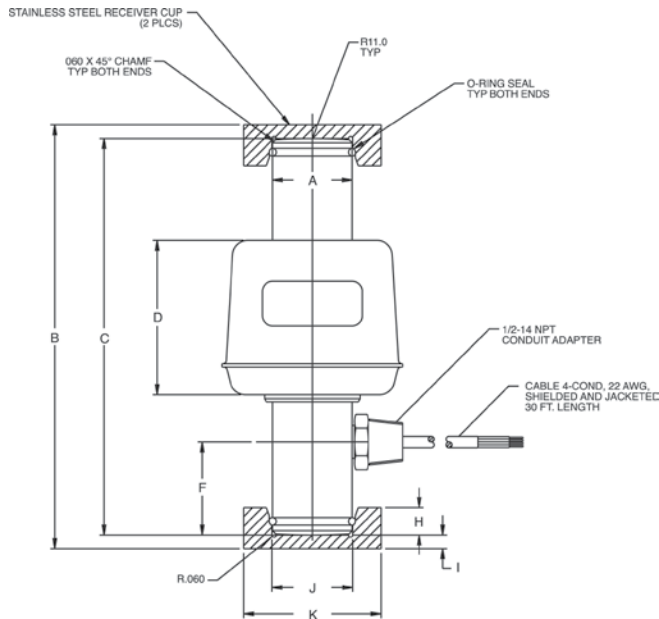
Picture is a representation of actual product

Rated Capacity	A	B	C	D	F	H	I	J	K
lb/in									
50,000	1.46	7.75	7.25	2.82	1.70	0.50	0.25	1.48	2.50
kg/mm									
22,679.6	37.0	196.8	184.1	71.6	43.1	12.7	6.35	37.5	63.5

Order Information

Load Rating	Part#	Est. Weight	Price
50,000 lb*	68918	7 lb	Consult
Replacement Parts			
Replacement load cup set upper and lower included	85433	1 lb	Consult
Replacement O-ring	92988	1 lb	Consult/each

*Load cell supplied with load cups



Interchangeable Products

CARDINAL®
 SCA-50K.....—

Specifications

Full Scale Output:

2 mv/V nominal

Output Resistance:

1,050 (± 10) ohm

Input Resistance:

1,100-1,500 ohm

Material/Finish:

Stainless steel

Temperature:

Compensated range
 14°F to 104°F/-10°C to 40°C
 Operating range
 -40°F to 150°F/-40°C to 65°C

Safe Overload:

150% full scale

Rated Excitation:

5-10 VDC (15 V maximum)

Combined Error:

0.025% full scale

Non-repeatability:

0.01% full scale

Insulation Resistance:

1,000 megohms

Seal Type:

Welded seal, IP67

Cable Length:

30 ft (9 m)

Cable Diameter:

0.200 polyurethane jacket

Cable Color Code:

Green+ Excitation
 Black.....- Excitation
 Red+ Signal
 White- Signal

Warranty:

Two-year limited warranty

Approvals:

