

# SQB

Alloy Steel, Environmentally Sealed, NTEP Certified 1:5,000 Class III Multiple Cell, IP67



## Interchangeable Products

- RICE LAKE WEIGHING SYSTEMS  
**RL35023**..... page 138
- VPG SENSORTRONICS®  
**65023A**..... page 319

## Weigh Module Available

- RICE LAKE WEIGHING SYSTEMS  
**RL50210**..... page 147
- RICE LAKE WEIGHING SYSTEMS  
**RL1800 Series**..... page 62

## Dimensions

Picture is a representation of actual product

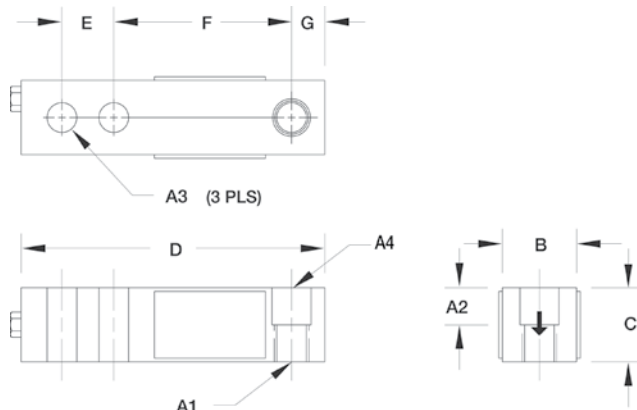
Rated Capacity	A4	A2	A3	A1	B	C	D	E	F	G
<b>lb/in</b>										
500	0.53 dia	0.50	0.53	1/2-20UNF	1.25	1.00	5.12	1.00	3.00	0.50
1,000-5,000	0.53 dia	0.62	0.53	1/2-20UNF	1.25	1.25	5.12	1.00	3.00	0.50
5,000-10,000	0.78 dia	0.75	0.78	3/4-16UNF	1.50	1.50	6.75	1.50	3.75	0.75
15,000-20,000	1.03 dia	1.00	1.03	1-14UNS	2.00	2.00	8.88	2.00	4.88	1.00
<b>kg/mm</b>										
226.8	13.5 dia	12.7	13.5	1/2-20UNF	31.8	25.4	130.0	25.4	76.2	12.7
453.6-2,268.0	13.5 dia	15.8	13.5	1/2-20UNF	31.8	31.8	130.0	25.4	76.2	12.7
2,268.0-4,535.9	19.8 dia	19.1	19.8	3/4-16UNF	38.1	38.1	171.5	38.1	95.3	19.1
6,803.9-9,071.9	26.2 dia	25.4	26.2	1-14UNS	50.8	50.8	225.6	50.8	124.0	25.4

## Order Information

Load Rating	Part#	Est. Weight	Price
<b>NTEP Certified</b>			
1,000 lb	30106	3 lb	Consult
2,000 lb	30109	3 lb	Consult
2,500 lb	30112	3 lb	Consult
3,000 lb	30113	3 lb	Consult
4,000 lb	30270	3 lb	Consult
5,000 lb SE*	30114	3 lb	Consult
5,000 lb LE**	30115	5 lb	Consult
10,000 lb	30117	5 lb	Consult
<b>Non-NTEP Certified</b>			
500 lb	30101	3 lb	Consult
15,000 lb	30118	9 lb	Consult
20,000 lb	30121	10 lb	Consult

\* SE refers to small envelope

\*\* LE refers to large envelope



## Specifications

- Full Scale Output:**  
3.0 mV/V
- Output Resistance:**  
350 (± 3) ohm
- Input Resistance:**  
385 (± 5) ohm
- Material/Finish:**  
High-alloy steel, nickel plated
- Temperature:**  
Compensated range  
14°F to 104°F (-10°C to 40°C)  
Operating range  
-40° F to 150° F (-40° C to 65° C)

### Safe Overload:

150% full scale

### Safe Sideload:

100% full scale

### Rated Excitation:

5-10 VDC (15 V maximum)

### Combined Error:

0.02% full scale

### Insulation Resistance:

5,000 megohms

### Deflection at Capacity:

- 500 lb-1,000 lb=0.013 in (3.1 mm)
- 2,000 lb-3,000 lb=0.015 in (0.4 mm)
- 4,000 lb-5,000 lb=0.025 in (0.6 mm)
- 10,000 lb=0.035 in (0.9 mm)

### Seal Type:

Environmentally sealed, IP67

### Cable Length:

20 ft (6.1 m)

### Cable Diameter:

0.200 polyurethane jacket

### Cable Color Code:

- Red .....+ Excitation
- Black.....- Excitation
- Green .....+ Signal
- White .....- Signal
- Bare..... Shield

### Warranty:

One-year limited warranty

### Approvals:

