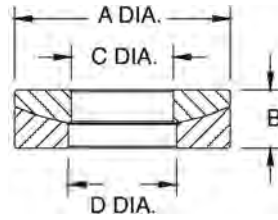


Spherical Washer Sets

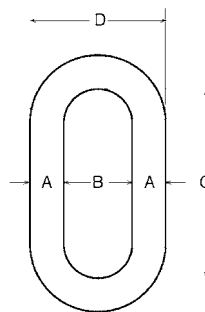


Part Number/Price

Part #	Bolt Size	A	B	C	D	Price					
Mild Steel											
15196	0.25 in	6.4 mm	0.62 in	15.8 mm	0.20 in	5.1 mm	0.28 in	7.1 mm	0.31 in	7.9 mm	Consult
15197	0.38 in	9.7 mm	0.88 in	22.4 mm	0.25 in	6.4 mm	0.41 in	10.4 mm	0.44 in	11.2 mm	Consult
15198	0.50 in	12.7 mm	1.12 in	28.5 mm	0.31 in	7.9 mm	0.53 in	13.5 mm	0.56 in	14.2 mm	Consult
15199	0.62 in	15.8 mm	1.38 in	35.1 mm	0.31 in	7.9 mm	0.66 in	16.8 mm	0.69 in	17.5 mm	Consult
15200	0.75 in	19.1 mm	1.62 in	41.1 mm	0.38 in	9.7 mm	0.78 in	19.8 mm	0.81 in	20.6 mm	Consult
15201	1.00 in	25.4 mm	2.00 in	50.8 mm	0.50 in	12.7 mm	1.06 in	26.9 mm	1.12 in	28.5 mm	Consult
15202	1.25 in	31.8 mm	2.62 in	66.6 mm	0.50 in	12.7 mm	1.31 in	33.3 mm	1.38 in	35.1 mm	Consult
15203	1.50 in	38.1 mm	2.88 in	73.2 mm	0.53 in	13.5 mm	1.56 in	39.6 mm	1.62 in	41.1 mm	Consult
15205	2.00 in	50.8 mm	3.88 in	98.6 mm	0.81 in	20.6 mm	2.06 in	52.3 mm	2.12 in	53.8 mm	Consult
Stainless Steel											
33218	0.50 in	12.7 mm	1.12 in	28.5 mm	0.31 in	7.9 mm	0.53 in	13.5 mm	0.56 in	14.2 mm	Consult
33220	0.75 in	19.1 mm	1.62 in	41.1 mm	0.38 in	9.7 mm	0.78 in	19.8 mm	0.81 in	20.6 mm	Consult

Standard Features

- Self-colored or hot-dip galvanized
- Forged carbon steel—quenched and tempered



Weldless End Links



Part Number/Price

Part #	A	B	C	D	Safe Load*	Price				
F312L	0.625 in	15.9 mm	1.00 in	25.4 mm	3.25 in	82.6 mm	2.32 in	58.9 mm	9,300 lb (4,218.4 kg)	Consult
17810	0.875 in	22.2 mm	2.00 in	50.8 mm	5.13 in	130.3 mm	3.75 in	95.3 mm	12,000 lb (5,443.1 kg)	Consult
21911	1.00 in	22.2 mm	2.25 in	57.2 mm	5.75 in	146.1 mm	4.25 in	108.0 mm	15,200 lb (6,894.6 kg)	Consult
65430	1.25 in	31.8 mm	2.50 in	63.5 mm	7.00 in	177.8 mm	5.00 in	127.0 mm	26,400 lb (11,974.9 kg)	Consult
21912	1.375 in	34.9 mm	2.75 in	69.9 mm	7.75 in	196.9 mm	5.50 in	139.7 mm	30,000 lb (13,607.8 kg)	Consult

*Do not exceed the safe load