

**Specifications**

- Full Scale Output:**  
1.5 mV/V
- Output Resistance:**  
605 (± 5) ohm
- Input Resistance:**  
670 (± 15) ohm
- Material/Finish:**  
Stainless steel
- Temperature:**  
Operating range  
-0°F to 150°F (-18°C to 65°C)
- Seal Type:**  
Environmentally sealed, IP68
- Safe Overload:**  
150% full scale
- Rated Excitation:**  
5-10 VDC
- Combined Error:**  
0.02% of applied load
- Insulation Resistance:**  
2,000 megohms
- Cable Length:**  
15 m (49.2 ft)
- Cable Color Code:**  
Green +Excitation  
Black -Excitation  
Red +Signal  
White -Signal  
Blue +Sense  
Brown -Sense
- Warranty:**  
One-year limited warranty



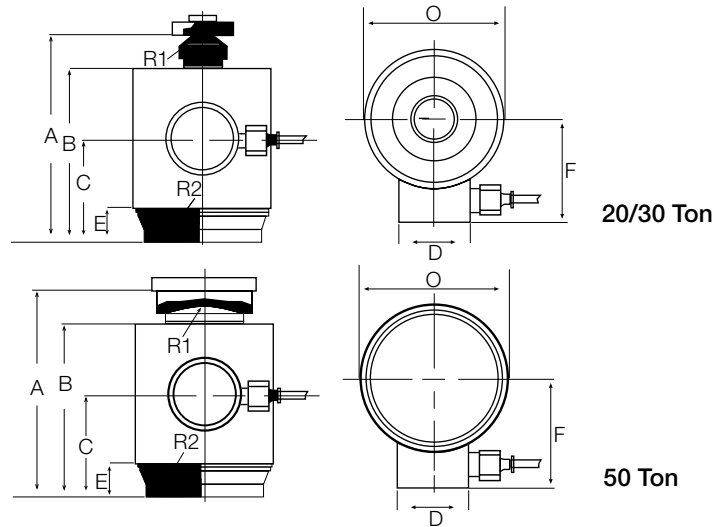
**Dimensions**

Picture is a representation of actual product

Rated Capacity	A	B	C	D	E	F	O	R1	R2
kg/mm									
20,000	138.25	112.25	72.25	50.0	32.25	69.0	88.0	15.0	150.0
30,000	138.25	112.25	72.25	50.0	32.25	69.0	88.0	15.0	150.0
50,000	155.5	115.75	74.00	50.0	32.25	69.0	88.0	35.0	300.0

**Order Information**

Load Rating	Part#	Est. Weight	Price
20,000 kg	169233	10 lb	Consult
30,000 kg	169234	10 lb	Consult
50,000 kg	169235	13 lb	Consult



Load cups not included

