

**Interchangeable Products**

RICE LAKE WEIGHING SYSTEMS

**RL75016WHE** ..... page 163

VPG CELTRON®

**DSR-HSS** ..... page 225

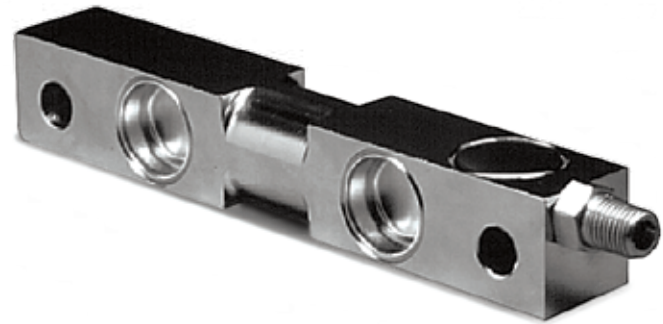
VPG SENSORTRONICS®

**65016WH** ..... page 332

**Weigh Module Available**

RICE LAKE WEIGHING SYSTEMS

**RL1600 Series** page 92 and page 94



**APPROVALS**



**Specifications**

**Full Scale Output:**

3.0 mV/V nominal

**Output Resistance:**

699-707 ohms

**Input Resistance:**

686-714 ohms

**Material/Finish:**

Stainless steel

**Temperature:**

Operating range  
0°F to 150°F (-18°C to 65°C)

**Seal Type:**

Welded-seal, IP67

**Safe Overload:**

150% full scale

**Safe Sideload:**

100% full scale

**Rated Excitation:**

5- 10 V DC (15 V maximum)

**Nonlinearity:**

0.03% full scale

**Hysteresis:**

0.02% full scale

**Insulation Resistance:**

5,000 megohms

**Cable Length:**

25 ft (7.6 m)

**Cable Diameter:**

0.200 = 1,000 lb - 25,000 lb,  
0.305 = 50,000 lb - 75,000 lb  
polyurethane jacket

**Cable Color Code:**

Red +Excitation  
Black -Excitation  
Green +Signal  
White -Signal

**Warranty:**

One-year limited warranty

**Approvals:**

cFMus

**Dimensions**

Picture is a representation of actual product

Rated Capacity	E	G	A1	A2	B	C	CONDUIT ADAPTER	F
<b>lb/in</b>								
1,000-5,000	0.50	1.25	1.25	1.25	7.50	6.25	1/4-18 NPT	1.12
10,000-25,000	0.81	1.99	1.44	1.94	8.75	7.50	1/4-18 NPT	1.62
35,000	0.81	2.50	1.50	2.50	8.75	7.50	1/4-18 NPT	1.62
50,000	1.31	3.00	2.44	2.94	13.50	11.50	1/2-14 NPT	3.75
75,000	1.31	—	2.44	2.94	13.50	11.50	1/2-14 NPT	3.75
<b>kg/mm</b>								
453.6-2,268.0	12.7	31.8	31.8	31.8	190.5	158.8	1/4-18 NPT	28.4
4,535.9-11,339.8	20.6	50.8	36.6	49.3	222.3	190.5	1/4-18 NPT	41.1
15,876.0	—	—	—	—	—	—	—	41.1
22,679.6	33.3	76.2	62.0	74.7	342.9	292.1	1/2-14 NPT	95.2
34,019.4	33.3	—	62.0	74.7	342.9	292.1	1/2-14 NPT	95.2

**Order Information**

Load Rating	Part#	Est. Weight	Price
1,000 lb	<b>36295</b>	4 lb	Consult
1,500 lb	<b>36296</b>	4 lb	Consult
2,000 lb	<b>36297</b>	4 lb	Consult
2,500 lb	<b>36298</b>	4 lb	Consult
5,000 lb	<b>36299</b>	4 lb	Consult
10,000 lb	<b>36300</b>	7 lb	Consult
15,000 lb	<b>36301</b>	7 lb	Consult
20,000 lb	<b>36302</b>	7 lb	Consult
25,000 lb	<b>36303</b>	7 lb	Consult
50,000 lb	<b>36304</b>	27 lb	Consult
75,000 lb*	<b>36305</b>	27 lb	Consult

\*75,000 lb capacity has a square center

