

SINGLE-ENDED BEAM

65023A-5507

Alloy Steel, Environmentally Sealed, NTEP Certified 1:5,000 Class III Multiple Cell, IP67

VPG SENSORTRONICS



APPROVALS



Specifications

- Full Scale Output:**
3.0 mV/V
- Output Resistance:**
349-355 ohms
- Input Resistance:**
343-357 ohms
- Material/Finish:**
High-alloy steel, nickel plated
- Temperature:**
Compensated range
14°F to 104°F (-10°C to 40°C)
Operating range
0°F to 150°F (-18°C to 65°C)
- Seal Type:**
Environmentally sealed, IP67
- Safe Overload:**
150% full scale
- Safe Sideload:**
100% full scale
- Rated Excitation:**
5- 10 V DC (15 V DC max)
- Combined Error:**
0.02% full scale
- Insulation Resistance:**
5,000 megohms
- Deflection at Capacity:**
1,000 lb=0.013 in (0.33 mm)
2,500 lb=0.015 in (0.38 mm)
- Cable Length:**
10 ft (3.05 m)
- Cable Diameter:**
0.200 polyurethane jacket
- Cable Color Code:**
Red +Excitation
Black -Excitation
Green +Signal
White -Signal
- Warranty:**
One-year limited warranty
- Approvals:**
cFMus
NTEP

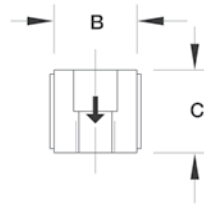
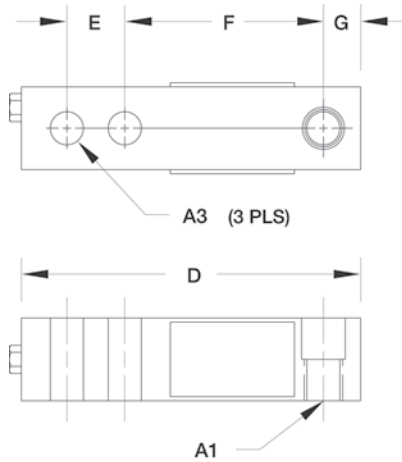
Dimensions

Picture is a representation of actual product

Rated Capacity	A1	A3	B	C	D	E	F	G
lb/in								
1,000-2,500	1/2-20 UNF	0.53	1.25	0.75	5.12	1.00	3.00	0.50
kg/mm								
453.6-1,134.0	1/2-20 UNF	13.5	31.8	19.05	130.1	25.4	76.2	12.7

Order Information

Load Rating		Part#	Est. Weight	Price
1,000 lb	453.6 kg	107785	3 lb	Consult
2,500 lb	1,134.0 kg	107786	3 lb	Consult



www.ricelake.com | Phone: 800-472-6703

