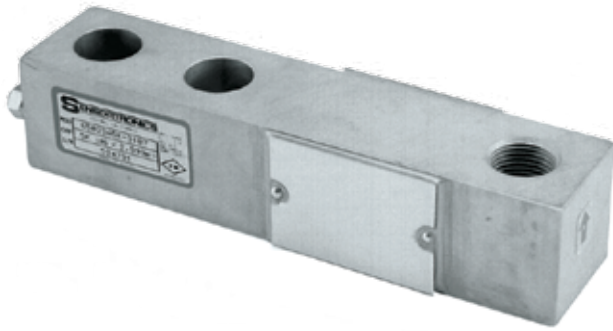


65023SS

Stainless Steel, Environmentally Sealed, IP67



APPROVALS



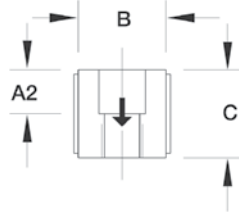
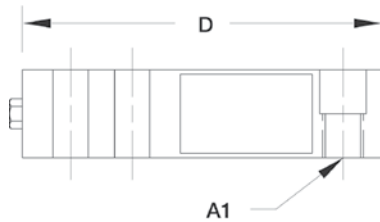
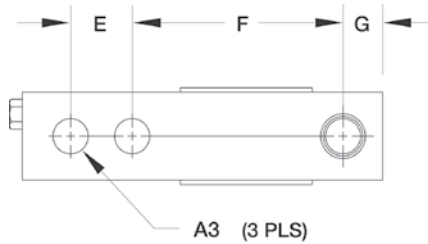
Dimensions

Picture is a representation of actual product

Rated Capacity	A1	A2	A3	B	C	D	E	F	G
lb/in									
250-500	1/2-20 UNF	0.50	0.53	1.25	1.00	5.12	1.00	3.00	0.50
15,000-20,000	1-14 UNS	1.00	1.03	2.00	2.00	8.88	2.00	4.88	1.00
kg/mm									
113.4-226.8	1/2-20 UNF	12.7	13.5	31.8	25.4	130.1	25.4	76.2	12.7
6,803.9-9,071.9	1-14 UNS	25.4	26.2	50.8	50.8	225.6	50.8	124.00	25.4

Order Information

Load Rating	Part #	Est. Weight	Price
Threaded Hole			
250 lb	113.4 kg	46499	3lb Consult
500 lb	226.8 kg	17188	3lb Consult
15,000 lb	6,803.9 kg	17156	9lb Consult
20,000 lb	9,071.9 kg	17160	9lb Consult



Interchangeable Products

RICE LAKE WEIGHING SYSTEMS
RL35023S page 140

Weigh Module Available

RICE LAKE WEIGHING SYSTEMS
RL50210 TA page 54
 RICE LAKE WEIGHING SYSTEMS
RL1800 Series..... page 66

Specifications

- Full Scale Output:**
3.0 mV/V
- Output Resistance:**
349-355 ohms
- Input Resistance:**
343-357 ohms
- Material/Finish:**
Stainless steel
- Temperature:**
Operating range
0°F to 150°F (-18°C to 65°C)
- Seal Type:**
Environmentally sealed, IP67
- Safe Overload:**
150% full scale
- Safe Sideload:**
100% full scale
- Rated Excitation:**
5- 10 V DC (15 V maximum)
- Nonlinearity:**
0.03% full scale
- Hysteresis:**
0.02% full scale
- Insulation Resistance:**
5,000 megohms
- Deflection at Capacity:**
250 lb-500 lb=0.013 in (0.33 mm),
15,000 lb-20,000 lb=0.048 in-0.013 in
(1.22 mm-0.33 mm)
- Cable Length:**
20 ft (6.1 m)
- Cable Diameter:**
0.200 polyurethane jacket
- Cable Color Code:**
Red +Excitation
Black -Excitation
Green +Signal
White -Signal
- Warranty:**
One-year limited warranty
- Approvals:**
cFMus