

65040A-1127W

Alloy Steel, Welded Seal, NTEP Certified 1:10,000 Class IIIIL Multiple Cell, IP67



APPROVALS



Interchangeable Products

- RICE LAKE WEIGHING SYSTEMS
RL75223 page 166
- VPG REVERE®
5223 page 295
- ARTECH®
80210 —
- THURMAN®
TSC 800 —

Weigh Module Available

- RICE LAKE WEIGHING SYSTEMS
Translink™ page 100

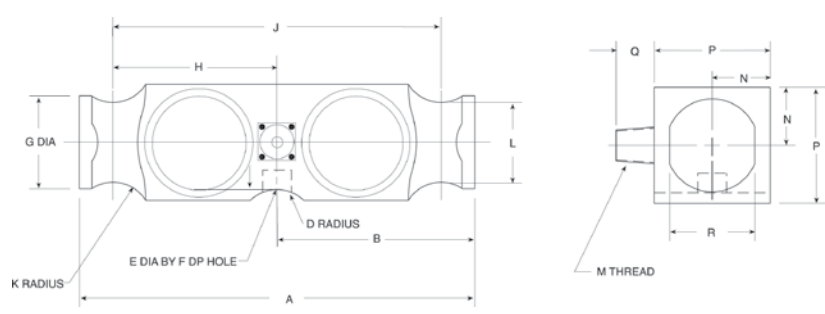
Dimensions

Picture is a representation of actual product

Rated Capacity	A	B	D	E	F	G	H	J	K	L	M	N	P	Q	R
lb/in															
50,000-65,000	10.25	5.12	1.00	0.75	0.78	2.40	4.25	8.50	1.00	2.06	1/2-14 NPT	1.50	3.00	1.03	2.20
100,000	10.25	5.12	1.00	—	—	2.40	4.25	8.50	1.00	2.06	1/2-14 NPT	1.50	3.00	1.03	2.20
kg/mm															
22,679.6-29,483.5	260.4	130.1	25.4	19.1	19.8	61.0	108.0	215.9	25.4	5.2	1/2-14 NPT	38.1	76.2	26.2	55.9
45,359.2	260.4	130.1	25.4	—	—	61.0	108.0	215.9	25.4	5.2	1/2-14 NPT	38.1	76.2	26.2	55.9

Order Information

Load Rating	Part#	Est. Weight	Price
50,000 lb	66080	18 lb	Consult
65,000 lb	87162	20 lb	Consult
100,000 lb	87163	20 lb	Consult



Specifications

- Full Scale Output:**
3.0 mV/V
- Output Resistance:**
686-714 ohms
- Input Resistance:**
699-707 ohms
- Material/Finish:**
High-alloy steel
- Temperature:**
Compensated range
14°F to 104°F (-10°C to 40°C)
Operating range
0°F to 150°F (-18°C to 65°C)
- Seal Type:**
Welded-seal, IP67
(Conduit is recommended for maximum protection against the ingress of water and moisture through the cable entry).
- Safe Overload:**
150% full scale
- Safe Sideload:**
100% full scale
- Rated Excitation:**
5- 10 V DC (15 V maximum)
- Non-repeatability:**
0.01% full scale
- Combined Error:**
0.03% full scale
- Insulation Resistance:**
1,000 megohms
- Deflection at Capacity:**
50,000 lb=0.018 in (0.5 mm),
65,000 lb=0.022 in (0.6 mm),
100,000 lb=0.034 in (0.9 mm)
- Cable Length:**
40 ft (12.2 m)
- Cable Diameter:**
0.305 polyurethane jacket
- Cable Color Code:**
Red +Excitation
Black -Excitation
Green +Signal
White -Signal
- Warranty:**
One-year limited warranty
- Approvals:**
cFMus
NTEP

