

65040A

Alloy Steel, Environmentally Sealed, NTEP Certified Class IIIIL Multiple Cell 1:6,000/1:10,000, IP67



APPROVALS



Interchangeable Products

- RICE LAKE WEIGHING SYSTEMS
RL75040..... page 168
- VPG CELTRON®
DLB..... page 228
- THURMAN®
TSC 840..... —

Weigh Module Available

- RICE LAKE WEIGHING SYSTEMS
Translink™..... page 100

Dimensions

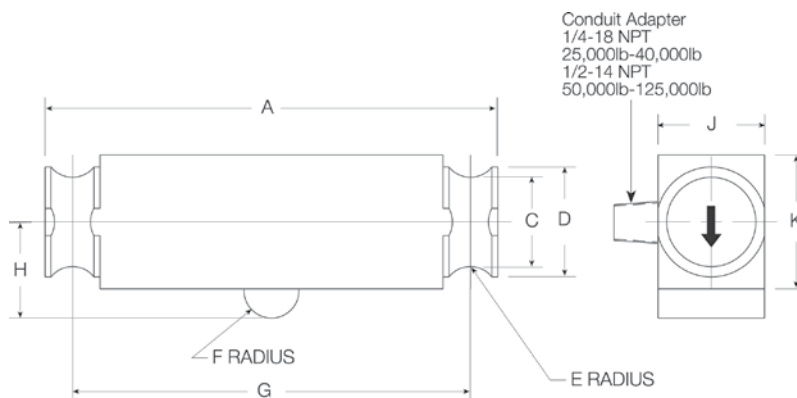
Picture is a representation of actual product

Rated Capacity	A	C	D	E	F	G	H	J	K
lb/in									
25,000-50,000 SE	8.25	1.63	2.00	0.50	0.50	7.25	1.75	1.94	2.44
50,000-75,000	11.50	1.70	2.20	0.75	1.00	10.00	2.00	1.94	2.94
100,000-125,000	14.50	2.44	3.20	1.00	1.50	12.50	2.75	2.90	3.86
kg/mm									
11,339.8-22,679.6 SE	209.6	41.4	50.8	12.7	12.7	184.2	44.5	49.3	62.0
22,679.6-34,019.4	292.1	43.2	55.9	19.1	25.4	254.0	50.8	49.3	74.7
45,359.2-56,699.1	368.3	62.0	81.3	25.4	38.1	317.5	69.9	73.7	98.0

Order Information

Load Rating		Part#	Est. Weight	Price
NTEP Certified 1:10,000				
25,000 lb	11,339.8 kg	21598	11 lb	Consult
40,000 lb	18,143.7 kg	21599	11 lb	Consult
50,000 lb SE	22,679.6 kg	69562	11 lb	Consult
50,000 lb	22,679.6 kg	21600	19 lb	Consult
60,000 lb	27,215.3 kg	21601	19 lb	Consult
75,000 lb	34,019.4 kg	21602	19 lb	Consult
100,000 lb	45,359.2 kg	21603	40 lb	Consult
125,000 lb	56,699.1 kg	21604	40 lb	Consult

SE=small envelope



Specifications

- Full Scale Output:**
3.0mV/V
- Output Resistance:**
686-714 ohms
- Input Resistance:**
699-707 ohms
- Material/Finish:**
High-alloy steel, nickel plated
- Temperature:**
Compensated range
14°F to 104°F (-10°C to 40°C)
Operating range
0°F to 150°F (-18°C to 65°C)
- Seal Type:**
Environmentally sealed, IP67
- Safe Overload:**
150% full scale
- Safe Sideload:**
100% full scale
- Rated Excitation:**
5- 10 V DC (15 V maximum)
- Combined Error:**
0.02% full scale
- Insulation Resistance:**
1,000 megohms
- Cable Length:**
35 ft (10.6 m)
- Cable Diameter:**
0.200 = 25,000 lb,
0.305 = 50,000SE - 125,000 lb
polyurethane jacket
- Cable Coloring:**
Red +Excitation
Black -Excitation
Green +Signal
White -Signal
- Warranty:**
One-year limited warranty
- Approvals:**
cFMus
NTEP