

Interchangeable Products

- FAIRBANKS®
Rodan 90814-40 k—
- FAIRBANKS
Rodan 91088-50 k—

Specifications

- Full Scale Output:**
3.0mmV/V
- Output Resistance:**
699-707 ohms
- Input Resistance:**
686-714 ohms
- Material/Finish:**
High-alloy steel, nickel plated
Stainless steel
- Temperature:**
Compensated range
14°F to 104°F (-10°C to 40°C)
Operating range
0°F to 150°F (-18°C to 65°C)
- Seal Type:**
Environmentally sealed, IP67
Welded-seal, IP67 - pn 67387

- Safe Overload:**
150% full scale
- Safe Sideload:**
100% full scale
- Rated Excitation:**
5- 10 V DC (15 V maximum)
- Combined Error:**
0.02% full scale
- Insulation Resistance:**
5,000 ohms
- Cable Length:**
60 ft (18.2 m), copper overbraid
- Cable Diameter:**
0.230 polyurethane jacket
- Cable Coloring:**
Red +Excitation
Black -Excitation
Green +Signal
White -Signal

Warranty:
One-year limited warranty

Approvals:
cFMus
NTEP



PN 154800 shown

APPROVALS



Dimensions

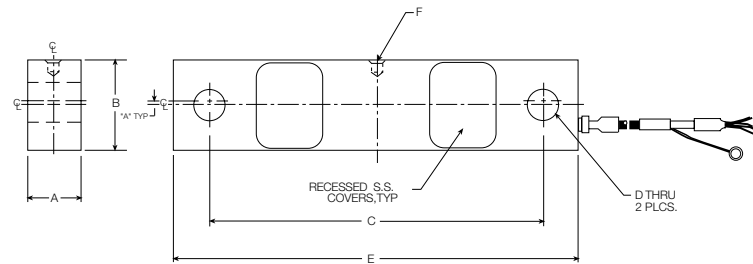
Picture is a representation of actual product

Rated Capacity	A	B	C	D	E	F
lb/in						
40,000	1.94	2.44	8.75	0.78	10.50	0.257 x 0.375 DP
50,000	1.94	2.44	8.75	0.78	10.50	0.257 x 0.375 DP
kg/mm						
18,143.7	49.3	62.0	222.3	19.8	266.7	6.5 x 9.5 DP
22,679.6	49.3	62.0	222.3	19.8	266.7	6.5 x 9.5 DP

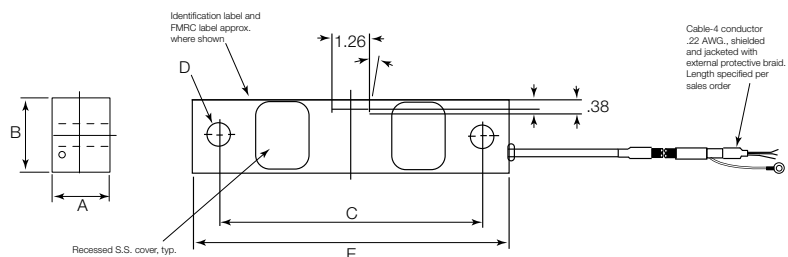
Order Information

Load Rating	Part#	Est. Weight	Price
Alloy Steel			
40,000 lb	47850	18 lb	Consult
50,000 lb	47851	18 lb	Consult
Stainless Steel			
50,000 lb (welded-seal)	67387	18 lb	Consult
50,000 lb* (environmentally sealed)	154800	18 lb	Consult
Mounting Assembly Accessories*			
Load Button	25524	1 lb	Consult
Load Pin	50807	1 lb	Consult
Bearing Screw	44837	1 lb	Consult
Bushing	50748	1 lb	Consult
Load Cell Stand	50767	1 lb	Consult
Support Pin	50747	1 lb	Consult
Washer	15180	1 lb	Consult
Cotter Pin	15244	1 lb	Consult
Load Button (use with 154800)*	154802	1 lb	Consult

*Counterbored hole for load button



PN 47850, 47851, 67387



PN 154800