

**Interchangeable Products**

RICE LAKE WEIGHING SYSTEMS

**RL75058I** ..... page 164

VPG SENSORTRONICS®

**65058A** ..... page 333

**Weigh Module Available**

RICE LAKE WEIGHING SYSTEMS

**MVS** ..... page 98

**Specifications**

**Full Scale Output:**

3.0 mV/V

**Output Resistance:**

700 (± 5) ohm

**Input Resistance:**

770 (± 10) ohm

**Material/Finish:**

High-alloy steel, nickel plated

**Temperature:**

Compensated range  
14°F to 104°F (-10°C to 40°C)  
Operating range  
0°F to 150°F (-18°C to 65°C)

**Seal Type:**

Environmentally sealed, IP67

**Safe Overload:**

150% full scale

**Safe Sideload:**

100% full scale

**Rated Excitation:**

5-10 VDC (15 V maximum)

**Combined Error:**

0.025%

**Insulation Resistance:**

5,000 megohms

**Cable Length:**

35 ft (10.6 m)

**Cable Diameter:**

0.200 polyurethane jacket (20,000 lb-25,000 lb)  
0.305 polyurethane jacket (40,000 lb-125,000 lb)

**Cable Color Code:**

Red +Excitation  
Black -Excitation  
Green +Signal  
White -Signal

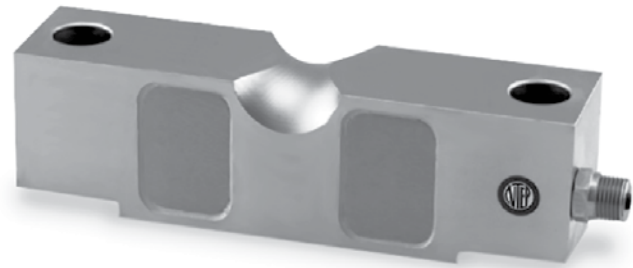
**Warranty:**

One-year limited warranty

**Approvals:**

cFMus  
NTEP

**APPROVALS**



**Dimensions**

Picture is a representation of actual product

Rated Capacity	L	L1	L2	W	H	H1	H2	D	R	R1	T
<b>lb/in</b>											
20,000-25,000	7.75	4.99	6.50	1.69	1.94	1.70	1.63	0.68	0.90	0.75	1/4-18 NPT
40,000	10.25	6.39	8.50	1.94	2.44	2.10	2.00	0.81	1.12	1.00	1/4-18 NPT
50,000-75,000	10.25	6.39	8.50	2.44	2.94	2.65	2.54	1.06	1.37	1.00	1/2-14 NPT
100,000-125,000	15.25	8.99	12.75	2.90	3.86	2.43	3.30	1.62	1.80	1.50	1/2-14 NPT
<b>kg/mm</b>											
9,072.0-11,340.0	196.9	126.7	165.1	42.9	49.3	43.2	41.4	17.3	22.9	19.1	1/4-18 NPT
18,144.0	260.4	162.3	215.9	49.3	62.0	53.3	50.8	20.6	28.5	25.4	1/4-18 NPT
22,680.0-34,020.0	260.4	162.3	215.9	62.0	74.7	67.3	64.5	26.9	34.8	25.4	1/2-14 NPT
45,360.0-56,700.0	387.4	228.4	323.9	73.7	98.0	87.1	83.8	41.2	45.7	38.1	1/2-14 NPT

**Order Information**

Load Rating	Part#	Est. Weight	Price
20,000 lb	46675	8 lb	Consult
25,000 lb	46676	8 lb	Consult
40,000 lb	46677	13 lb	Consult
50,000 lb	46678	19 lb	Consult
60,000 lb	46679	19 lb	Consult
75,000 lb	46680	19 lb	Consult
100,000 lb	46681	40 lb	Consult
125,000 lb	46682	40 lb	Consult

