

Specifications

- Full Scale Output:**
3.0 mV/V (25-100 lb)
2.0 mV/V (6 kg)
- Output Resistance:**
350 (± 7) ohm
- Input Resistance:**
400 (± 6) ohm
- Material/Finish:**
Stainless steel
- Temperature:**
Operating range
0°F to 150°F (-18°C to 65°C)
- Seal Type:**
Welded-seal, IP67
- Safe Overload:**
150% full scale
- Rated Excitation:**
5-5 10 VAC/DC (15 V maximum)
- Combined Error:**
0.03% full scale
- Non-repeatability:**
0.01% full scale
- Insulation Resistance:**
5,000 megohms
- Cable Length:**
10 ft (3.1 m)
- Cable Color Code:**
Green +Excitation
Black -Excitation
White +Signal
Red -Signal
- Warranty:**
One-year limited warranty
- Approvals:**
cFMus



APPROVALS



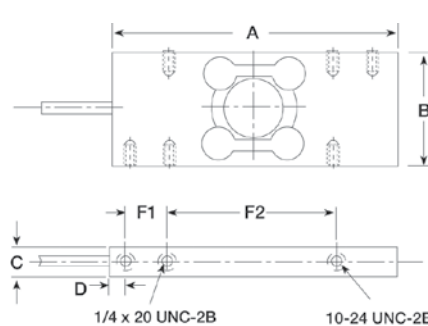
Dimensions

Picture is a representation of actual product

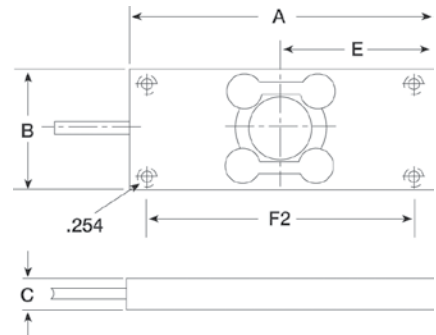
Rated Capacity	A	B	C	D	E	F1	F2
kg/mm							
6	127.0	50.2	18.5	—	63.5	—	107.9
25-50	127.0	50.2	18.5	6.3	—	19.0	76.2
100	127.0	46.2	23.8	6.3	—	19.0	76.2
lb/in							
6	5.0	1.98	0.73	—	2.5	—	4.25
25-50	5.0	1.97	0.73	0.25	—	0.75	3.0
100	5.0	1.87	0.94	0.25	—	0.75	3.0

Order Information

Load Rating	Part#	Est. Weight	Price
6 kg	22335	2 lb	Consult
6 kg	116475	2 lb	Consult
25 lb	17406	2 lb	Consult
50 lb	17407	2 lb	Consult
100 lb	17408	2 lb	Consult



HPS 6 kg - 100 lbs
(pn 22335, 17406, 17407, 17408)



HPS (6 KGS)
(PN 116475)