

# 102EH



## Alloy Steel

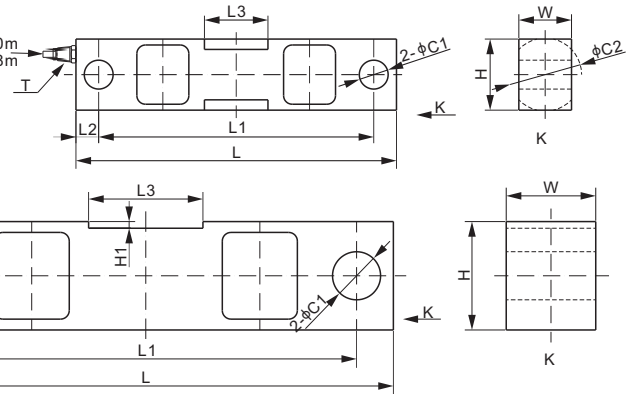


Capacity: 1K-60Klb

Capacity  $\leq$  35Klb Cable  $\phi$  5.1  $\times$  10m  
Capacity  $\geq$  50Klb Cable  $\phi$  7.6  $\times$  18m

Capacity: 75K-300Klb

Cable  $\phi$  7.6  $\times$  18m



CE RoHS



### DIMENSIONS

RATED CAPACITY	C1	C2	H	H1	L	L1	L2	L3	W	T
<b>Klb/inches</b>										
1-5	0.50	1.26	1.26	-	7.50	6.25	0.62	1.22	1.26	1/4-18 NPT
10-25	0.79	1.99	1.94	-	8.74	7.50	0.62	1.73	1.44	1/4-18 NPT
35	0.79	2.50	2.50	-	8.74	7.50	0.62	1.73	1.50	1/4-18 NPT
50-60	1.31	2.99	2.95	-	13.50	11.50	1.00	3.15	2.44	1/2-14 NPT
75	1.31	-	2.95	0.18	13.50	11.50	1.00	3.11	2.44	1/2-14 NPT
100-125	1.63	-	3.94	0.25	18.50	15.00	1.75	3.25	2.94	1/2-14 NPT
200	2.13	-	5.79	0.50	20.50	17.00	1.75	4.13	3.80	1/2-14 NPT
300	2.63	-	5.79	0.50	23.50	18.74	2.38	5.13	3.80	1/2-14 NPT
<b>kg/mm (conversion of above dimensions)</b>										
453.6-2,268	12.7	32.0	32.0	-	190.5	158.8	15.9	31.0	32.0	1/4-18 NPT
4,535.9-11,339.8	20.0	50.5	49.2	-	222.0	190.5	15.8	44.0	36.5	1/4-18 NPT
15,875.7	20.0	63.5	63.5	-	222.0	190.5	15.8	44.0	38.1	1/4-18 NPT
22,679.6-27,215.5	33.3	76.0	75.0	-	343.0	292.0	25.5	80.0	62.0	1/2-14 NPT
34,019.4	33.3	-	75.0	4.6	343.0	292.0	25.5	79.2	62.0	1/2-14 NPT
45,359.2-56,699	41.4	-	100.0	6.4	470.0	381.0	44.5	82.6	74.7	1/2-14 NPT
90,718.5	54.0	-	147.0	12.7	520.7	431.7	44.5	105.0	96.5	1/2-14 NPT
136,077.7	66.8	-	147.0	12.7	597.0	476.0	60.5	130.3	96.5	1/2-14 NPT

### SPECIFICATIONS

<b>Full Scale Output</b>	3.0 mV/V $\pm$ 0.25%	<b>Recommended Excitation</b>	10V (15V Maximum)
<b>Zero Balance</b>	$\pm$ 0.02 mV/V	<b>Insulation Resistance</b>	$>$ 2 [ 50V DC ] G $\Omega$
<b>Non-linearity</b>	Cap. $\leq$ 125Klb: $<$ $\pm$ 0.050%; Cap. $\geq$ 200Klb: $<$ $\pm$ 0.1%	<b>Compensated Temperature Range</b>	-10°C to 50°C / 14°F to 122°F
<b>Repeatability</b>	$<$ $\pm$ 0.030%	<b>Safe Overload</b>	150% of full scale
<b>Hysteresis Error</b>	Cap. $\leq$ 125Klb: $<$ $\pm$ 0.030%; Cap. $\geq$ 200Klb: $<$ $\pm$ 0.1%	<b>Breaking Overload</b>	300% of full scale
<b>Creep in 30 min.</b>	$<$ $\pm$ 0.030%	<b>Seal Type / IP Rating</b>	Environmentally Sealed / IP67
<b>Input Resistance</b>	700 $\Omega$ $\pm$ 10	<b>Cable Color Code</b>	Exc+ Red      Exc- Black Sig+ Green    Sig- White Shield Bare
<b>Output Resistance</b>	700 $\Omega$ $\pm$ 5		
<b>Element Material</b>	Alloy Steel, Nickel Plated		

### PART NUMBER

Rated Capacity	Part No.	Weight (kg) Approx.
1Klb	102EH-1Klb	1.7
1.5Klb	102EH-1.5Klb	1.7
2.5Klb	102EH-2.5Klb	1.7
5Klb	102EH-5Klb	1.7
10Klb	102EH-10Klb	2.9
15Klb	102EH-15Klb	2.9
20Klb	102EH-20Klb	2.9
25Klb	102EH-25Klb	2.9
35Klb	102EH-35Klb	3.9
50Klb	102EH-50Klb	11.3
60Klb	102EH-60Klb	11.3
75Klb	102EH-75Klb	11.3
100Klb	102EH-100Klb	23.0
125Klb	102EH-125Klb	23.0
200Klb	102EH-200Klb	48.0
300Klb	102EH-300Klb	50.0

### WEIGH MODULE

Model	Page
102EHM2	129

### INTERCHANGEABLE PRODUCTS

Manufacturer	Model
Coti Global	CG-16
Rice Lake	RL75016
Mettler Toledo	SLD425
Vishay Celtron	DSR
Vishay Revere Transducers	5203
Vishay Sensortronics	65016

www.anyload.com

© 2019 ANYLOAD V1 dimensions and specifications subject to change without notice