

106TS

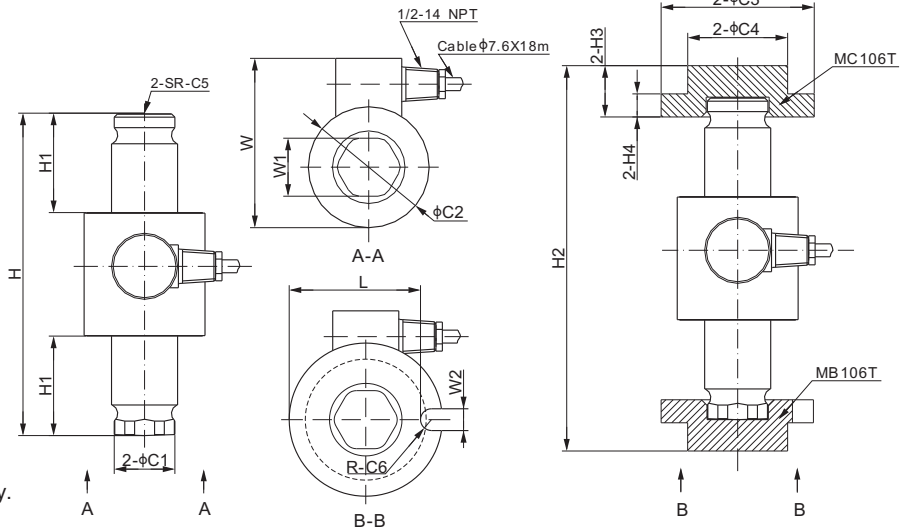


Stainless Steel



CE RoHS

Mounting hardware to be ordered separately.



DIMENSIONS

RATED CAPACITY	C1	C2	C3	C4	C5	C6	H	H1	H2	H3	H4	L	W	W1	W2
Klb/inches															
50-100	1.48	2.95	3.74	2.44	11.02	0.27	7.88	2.43	9.41	1.25	0.56	3.21	4.13	1.41	0.53
t/mm															
SE30	37.7	75.0	95.0	62.0	160.0	6.75	150.0	37.0	189.0	31.8	14.3	81.5	105.0	35.7	13.5
30	37.7	75.0	95.0	62.0	280.0	6.75	200.0	61.7	239.0	31.8	14.3	81.5	105.0	35.7	13.5

SPECIFICATIONS

Full Scale Output	2.0 mV/V ± 0.1%	Recommended Excitation	10V (15V Maximum)
Zero Balance	± 0.02 mV/V	Insulation Resistance	> 2 [50V DC] GΩ
Non-linearity	< ± 0.030%	Compensated Temperature Range	-10°C to 50°C / 14°F to 122°F
Repeatability	< ± 0.017%	Safe Overload	150% of full scale
Hysteresis Error	< ± 0.017%	Breaking Overload	300% of full scale
Creep in 30 min.	< ± 0.020%	Seal Type / IP Rating	Welded Seal / IP68
Input Resistance	1150Ω ± 50	Cable Color Code	Exc+ Red Exc- Black
Output Resistance	1000Ω ± 5		Sig+ Green Sig- White
Element Material	2Cr13 Stainless Steel		Shield Bare

PART NUMBER

Load Cell		Weight
Rated Capacity	Part No.	(kg) Approx.
50Klb	106TS-50Klb-YZ	4.2
100Klb	106TS-100Klb-YZ	4.4
SE30t	106TS-SE30t-YZ	3.7
30t	106TS-30t-YZ	5.8

Mounting Hardware		Weight	
Description	Load Cell Capacity	Part No.	(kg) Approx.
Alloy Steel:			
Cap	50Klb, 100Klb, SE30t, 30t	MC106TH-(50-100)Klb	1.1
Base	50Klb, 100Klb, SE30t, 30t	MB106TH-(50-100)Klb	1.1
Stainless Steel 2Cr13:			
Cap	50Klb, 100Klb, SE30t, 30t	MC106TS-(50-100)Klb-YZ	1.1
Base	50Klb, 100Klb, SE30t, 30t	MB106TS-(50-100)Klb-YZ	1.1

Rated Capacity	Part Number	INTERCHANGEABLE PRODUCTS	
		Coti-Global	Mettler-Toledo
50Klb	106TS-50Klb-YZ		Powercell 760/MTX*
100Klb	106TS-100Klb-YZ		Powercell 760/MTX*
SE30t	106TS-SE30t-YZ	CG-26S7-30t	0782, 30t
30t	106TS-30t-YZ	CG-26S7-30t-797	Powercell 760/MTX*

* Powercell 760 and MTX are digital load cells.



NTEP 1:10 000 Class IIIIL, Multiple Cell



OIML MAA C3, Y=16 000