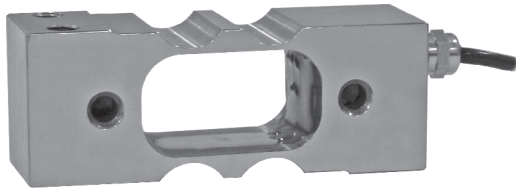
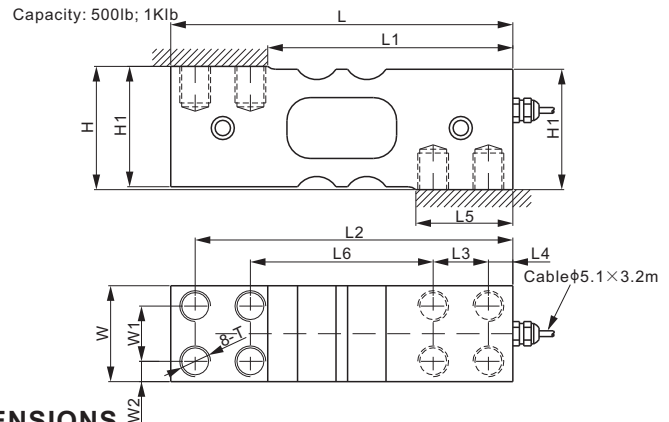
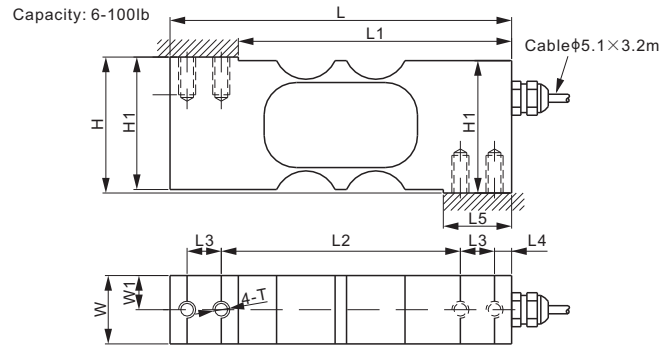
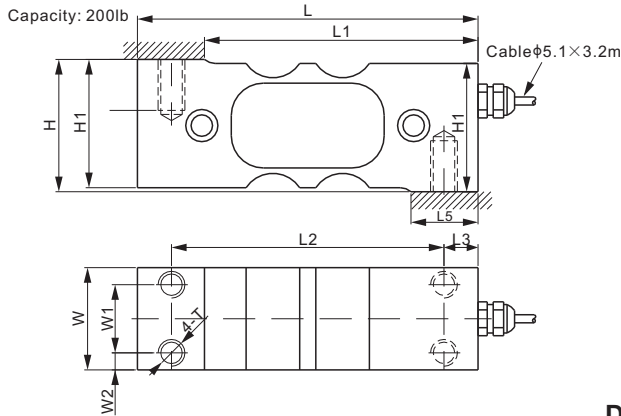


## Stainless Steel



CE RoHS



### DIMENSIONS

RATED CAPACITY	H	H1	L	L1	L2	L3	L4	L5	L6	W	W1	W2	T
<b>lb/inches</b>													
6	1.99	1.94	5.00	4.00	3.50	0.50	0.25	1.00	-	0.50	0.25	-	1/4-28 UNF
10-100	1.99	1.94	5.00	4.00	3.50	0.50	0.25	1.00	-	1.00	0.50	-	1/4-28 UNF
200	1.94	1.88	5.00	4.02	4.00	0.50	-	1.00	-	1.50	1.00	0.25	M10
500; 1,000	2.52	2.46	7.00	4.02	6.50	1.13	0.50	1.98	3.74	1.96	1.13	0.42	M16
<b>kg/mm</b> (conversion of above dimensions)													
2.72	50.5	49.2	127.0	101.6	88.9	12.7	6.4	25.4	-	12.7	6.4	-	1/4-28 UNF
4.54-45.36	50.5	49.2	127.0	101.6	88.9	12.7	6.4	25.4	-	25.4	12.7	-	1/4-28 UNF
90.72	49.3	47.8	127.0	102.0	101.6	12.7	-	25.4	-	38.1	25.4	6.4	M10
226.80; 453.59	64.0	62.5	177.8	127.4	165.1	28.7	12.7	50.4	95.0	49.8	28.7	10.6	M16

### SPECIFICATIONS

<b>Full Scale Output</b>	2.0 mV/V ± 10%	<b>Recommended Excitation</b>	10V (15V Maximum)
<b>Zero Balance</b>	± 0.02 mV/V	<b>Reference Max. Platform Size</b>	Cap. ≤ 100lb: 400 × 450 mm Cap. = 200lb: 500 × 550 mm Cap. ≥ 500lb: 650 × 700 mm
<b>Non-linearity</b>	< ± 0.017%	<b>Insulation Resistance</b>	> 2 [ 50V DC ] GΩ
<b>Repeatability</b>	< ± 0.017%	<b>Compensated Temperature Range</b>	-10°C to 40°C / 14°F to 104°F
<b>Hysteresis Error</b>	< ± 0.017%	<b>Safe Overload</b>	150% of full scale
<b>Creep in 30 min.</b>	< ± 0.023%	<b>Breaking Overload</b>	300% of full scale
<b>Input Resistance</b>	385Ω ± 15	<b>Seal Type / IP Rating</b>	Environmentally Sealed / IP66
<b>Output Resistance</b>	350Ω ± 3	<b>Cable Color Code</b>	Exc+ Red    Exc- Black Sig+ Green    Sig- White    Shield Bare
<b>Element Material</b>	2Cr13 Stainless Steel		

### PART NUMBER

Rated Capacity	Part No.	Weight (kg) Approx.
6lb	108QS-6lb-YZ	1.0
10lb	108QS-10lb-YZ	1.0
15lb	108QS-15lb-YZ	1.0
25lb	108QS-25lb-YZ	1.0
50lb	108QS-50lb-YZ	1.0
100lb	108QS-100lb-YZ	1.0
200lb	108QS-200lb-YZ	1.2
500lb	108QS-500lb-YZ	3.0
1Klb	108QS-1Klb-YZ	3.1

### INTERCHANGEABLE PRODUCTS

Manufacturer	Model
Cardinal	SP 6-100lb*
Cardinal	SP 200, 500, 1000lb
Coti Global	CG-SPL/CG-SPLM

\* SP 6-100lb is of aluminum construction