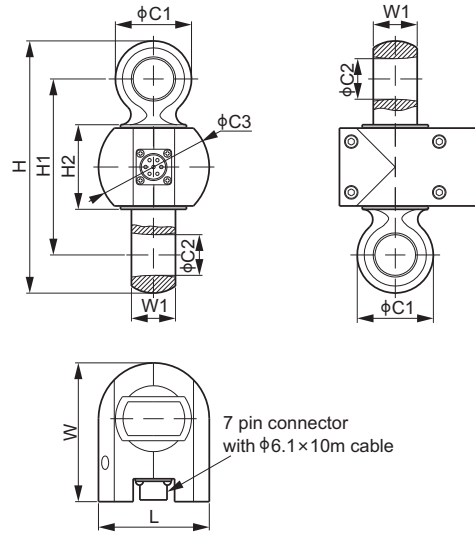


# 110RH; 110RH-ST



Alloy Steel; Patent Design



## DIMENSIONS

RATED CAPACITY	C1	C2	C3	H	H1	H2	L	W	W1	SUGGESTED SHACKLE
<b>110RH:</b>										
<b>t/mm</b>										
0.5; 1; 2	30.0	14.0	43.0	102.0	68.0	38.0	43.0	63.0	15.0	TBX-2t
3	32.0	18.0	55.0	119.0	80.0	39.0	55.0	83.0	18.0	TBX-3.25t
5	45.0	24.0	66.0	153.0	104.0	50.0	66.0	82.0	26.0	TBX-5t
10	60.0	33.0	73.0	195.0	125.0	50.0	73.0	90.5	40.0	TBX-12.5t
20	75.0	41.0	82.0	225.0	145.0	53.0	82.0	110.0	53.0	TBX-21t
30	87.0	44.0	92.0	248.0	150.0	50.0	92.0	125.0	58.0	Crosby G-2140-30t or TBX-30t
50	115.0	62.0	130.0	331.0	206.0	74.0	130.0	159.5	79.0	Crosby G-2140-55t or TBX-50t
100	170.0	88.0	-	442.0	260.0	65.0	176.0	213.0	122.0	Crosby G-2140-120t or TBX-110t
<b>lb/inches (conversion of above dimensions)</b>										
1,102.3; 2,205.1; 4,409.2	1.18	0.55	1.69	4.02	2.68	1.50	1.69	2.48	0.59	TBX-2t
6,613.9	1.26	0.71	2.17	4.69	3.15	1.54	2.17	3.27	0.71	TBX-3.25t
11,023.1	1.77	0.94	2.60	6.02	4.09	1.97	2.60	3.23	1.02	TBX-5t
22,046.2	2.36	1.30	2.87	7.68	4.92	1.97	2.87	3.56	1.57	TBX-12.5t
44,092.5	2.95	1.61	3.23	8.86	5.71	2.09	3.23	4.33	2.09	TBX-21t
66,138.7	3.43	1.73	3.62	9.76	5.91	1.97	3.62	4.92	2.28	Crosby G-2140-30t or TBX-30t
110,231.1	4.53	2.44	5.12	13.03	8.11	2.91	5.12	6.28	3.11	Crosby G-2140-55t or TBX-50t
220,462.3	6.69	3.46	-	17.4	10.24	2.56	6.93	8.39	4.80	Crosby G-2140-120t or TBX-110t
<b>110RH-ST:</b>										
<b>t/mm</b>										
0.5; 1; 2	33.0	18.0	43.0	110.0	74.0	38.0	43.0	63.0	18.0	Crosby G-2130-2t or SBX-2t or TBX-2.5t
3	35.0	21.0	55.0	129.0	88.0	39.0	55.0	83.0	25.0	Crosby G-2130-3.25t or SBX-3.25t
5	50.0	27.0	66.0	164.6	110.6	50.0	66.0	82.0	33.0	Crosby G-2130-6.5t or SBX-6.5t
10	63.0	37.0	73.0	205.0	135.0	50.0	73.0	90.5	41.0	Crosby G-2130-12t or SBX-12t
20	90.0	53.0	82.0	249.0	153.0	53.0	82.0	110.0	66.0	Crosby G-2130-25t or SBX-25t
<b>lb/inches (conversion of above dimensions)</b>										
1,102.3; 2,205.1; 4,409.2	1.30	0.71	1.69	4.33	2.91	1.50	1.69	2.48	0.71	Crosby G-2130-2t or SBX-2t or TBX-2.5t
6,613.9	1.38	0.83	2.17	5.08	3.46	1.54	2.17	3.27	0.98	Crosby G-2130-3.25t or SBX-3.25t
11,023.1	1.97	1.06	2.60	6.48	4.35	1.97	2.60	3.23	1.30	Crosby G-2130-6.5t or SBX-6.5t
22,046.2	2.48	1.46	2.87	8.07	5.31	1.97	2.87	3.56	1.61	Crosby G-2130-12t or SBX-12t
44,092.5	3.54	2.09	3.23	9.80	6.02	2.09	3.23	4.33	2.60	Crosby G-2130-25t or SBX-25t

TENSION LINKS

SPECIFICATIONS			
Full Scale Output	2.0 mV/V $\pm$ 0.25%	Recommended Excitation	10V (15V Maximum)
Zero Balance	$\pm$ 0.02 mV/V	Insulation Resistance	>2 [ 50V DC ] G $\Omega$
Non-linearity	< $\pm$ 0.03%	Compensated Temperature Range	-10°C to 50°C / 14°F to 122°F
Repeatability	< $\pm$ 0.03%	Safe Overload	200% of full scale
Hysteresis Error	< $\pm$ 0.03%	Breaking Overload	500% of full scale
Creep in 30 min.	< $\pm$ 0.03%	Seal Type / IP Rating	Environmentally Sealed / IP67
Input Resistance	1100 $\Omega$ $\pm$ 50	Cable Color Code	Exc+ Red      Exc- Black
Output Resistance	1000 $\Omega$ $\pm$ 10		Sig+ Green     Sig- White
Element Material	Alloy Steel, Powder Coating		Sen+ Blue      Sen- Yellow
			Shield Bare

### PART NUMBER

110RH		
Rated Capacity	Part No.	Self Weight with Cable (kg) Approx.
500kg	110RH-T2-500kg	0.8
1t	110RH-T2-1t	0.8
2t	110RH-T2-2t	0.8
3t	110RH-T2-3t	1.2
5t	110RH-T2-5t	2.1
10t	110RH-T2-10t	2.4
20t	110RH-T2-20t	4.4
30t	110RH-T2-30t	6.4
50t	110RH-T2-50t	13.9
100t	110RH-T2-100t	32.7

110RH-ST		
Rated Capacity	Part No.	Self Weight with Cable (kg) Approx.
500kg	110RH-ST-T2-500kg	1.1
1t	110RH-ST-T2-1t	1.1
2t	110RH-ST-T2-2t	1.1
3t	110RH-ST-T2-3t	1.3
5t	110RH-ST-T2-5t	2.0
10t	110RH-ST-T2-10t	2.5
20t	110RH-ST-T2-20t	4.0

### AVAILABLE OPTIONS

- Input Resistance 400  $\Omega$ , Output Resistance 350  $\Omega$ , IP65, part number is named as 110RH-xxt or 110RH-ST-xxt
- Input Resistance 1100  $\Omega$ , Output Resistance 1000  $\Omega$ , IP65, part number is named as 110RH-xxt-T1 or 110RH-ST-xxt-T1



0.5t-3t: NTEP 1:3 000 Class III, Single Cell;  
NTEP 1:5 000 Class III, Multiple Cell;  
5t-50t: NTEP 1:3 000, up to 1:6 000 Class III, Single Cell and Multiple Cell



1t-10t: OIML MAA C3, Y=15 000  
10t-50t: OIML MAA C3, up to C6, Y=13 500