

CE RoHS

DIMENSIONS

RATED CAPACITY	C1	C2	H	H1	T1	T2
247AA:						
kg/mm						
1-20	20.0	15.0	11.0	4.0	M3	M3 Depth5.0
lb/inches (conversion of above dimensions)						
2.20-44.09	0.79	0.59	0.43	0.16	M3	M3 Depth0.20
247AS:						
kg/mm						
30-200	20.0	15.0	11.0	4.0	M3	M3 Depth5.0
500-2,000	25.4	18.0	15.0	5.0	M5	M4 Depth7.0
5,000	40.0	32.0	25.0	8.0	M12	M4 Depth6.0
lb/inches (conversion of above dimensions)						
66.14-440.92	0.79	0.59	0.43	0.16	M3	M3 Depth0.20
1,102.3-4,409.2	1.00	0.71	0.59	0.20	M5	M4 Depth0.28
11,023.1	1.57	1.26	0.98	0.31	M12	M4 Depth0.24

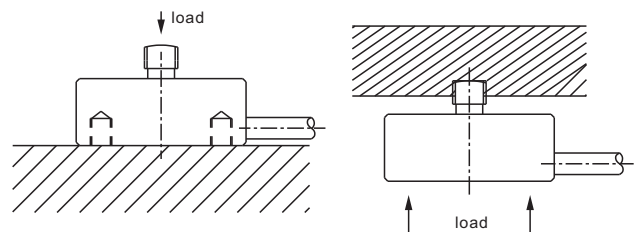
SPECIFICATIONS

Full Scale Output	Cap. ≤20kg: 1.0 mV/V ± 20%;	Recommended Excitation	10V (15V Maximum)
	Cap. ≥30kg: 1.5 mV/V ± 20%		Insulation Resistance
Zero Balance	± 0.03 mV/V	Nominal Temperature Range	-10°C to 40°C / 14°F to 104°F
Non-linearity	< ± 0.5%	Safe Overload	150% of full scale
Repeatability	< ± 0.3%	Breaking Overload	300% of full scale
Hysteresis Error	< ± 0.5%	Seal Type / IP Rating	Environmentally Sealed / IP66
Creep in 30 min.	< ± 0.5%	Cable Color Code	Exc+ Red Exc- Black
Input Resistance	375Ω ± 25		Sig+ Green Sig- White
Output Resistance	350Ω ± 3		Shield Bare
Element Material	Cap. ≤20kg: Aluminum Cap. ≥30kg: 17-4PH Stainless Steel		

PART NUMBER

Rated Capacity	Part No.	Weight (kg) Approx.
1kg	247AA-1kg	0.07
2kg	247AA-2kg	0.07
5kg	247AA-5kg	0.07
10kg	247AA-10kg	0.07
20kg	247AA-20kg	0.07
30kg	247AS-30kg	0.07
50kg	247AS-50kg	0.07
100kg	247AS-100kg	0.07
150kg	247AS-150kg	0.07
200kg	247AS-200kg	0.11
500kg	247AS-500kg	0.11
1t	247AS-1t	0.11
2t	247AS-2t	0.11
5t	247AS-5t	0.21

APPLICATION EXAMPLES



LOAD BUTTONS