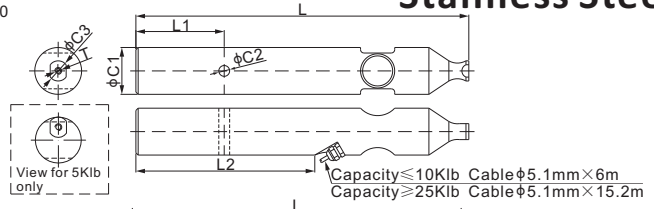
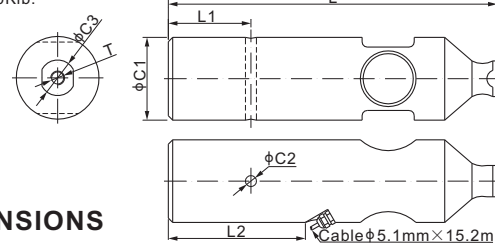




563WS; 563WS30
563WS30-CG:



563WS30-50Klb:



DIMENSIONS

| RATED CAPACITY | C1 | C2 | C3 | L | L1 | L2 | T |
|---|------|------|------|-------|-------|--------|----------------|
| 563WS: | | | | | | | |
| lb/inches | | | | | | | |
| 1,250 | 1.25 | 0.31 | 0.63 | 11.50 | 3.00 | 6.04 | #8-32 |
| 2,500 | 1.62 | 0.37 | 0.70 | 11.50 | 3.00 | 5.59 | #6-32 |
| 5,000 | 2.00 | 0.37 | 0.88 | 10.88 | 3.05 | 3.83 | #8-32 |
| 10,000 | 2.50 | 0.37 | 0.88 | 12.63 | 3.05 | 4.20 | #8-32 |
| 25,000 | 3.50 | 0.50 | 1.75 | 14.88 | 3.05 | 5.04 | 5/16-18 UNC-2B |
| kg/mm (conversion of above dimensions) | | | | | | | |
| 567 | 31.8 | 7.9 | 16.0 | 292.1 | 76.2 | 153.50 | #8-32 |
| 1,134 | 41.1 | 9.4 | 17.8 | 292.1 | 76.2 | 142.00 | #6-32 |
| 2,268 | 50.8 | 9.4 | 22.4 | 276.4 | 77.5 | 97.40 | #8-32 |
| 4,535.9 | 63.5 | 9.4 | 22.4 | 320.8 | 77.5 | 106.90 | #8-32 |
| 11,339.8 | 88.9 | 12.7 | 44.5 | 378.0 | 77.5 | 128.00 | 5/16-18 UNC-2B |
| 563WS30: | | | | | | | |
| lb/inches | | | | | | | |
| 37,500 | 3.50 | 0.50 | 1.75 | 14.88 | 3.05 | 5.04 | 5/16-18 UNC-2B |
| 50,000 | 3.74 | 0.50 | 1.61 | 14.88 | 3.74 | 7.05 | 5/8-16 UNC-2B |
| kg/mm (conversion of above dimensions) | | | | | | | |
| 17,009.7 | 88.9 | 12.7 | 44.5 | 378.0 | 77.5 | 128.00 | 5/16-18 UNC-2B |
| 22,679.6 | 95.0 | 12.7 | 40.9 | 378.0 | 95.0 | 179.00 | 5/8-16 UNC-2B |
| 563WS-CG: | | | | | | | |
| lb/inches | | | | | | | |
| 25,000 | 3.50 | 0.50 | 1.76 | 14.88 | 3.66 | 7.64 | 5/16-18 UNC-2B |
| kg/mm (conversion of above dimensions) | | | | | | | |
| 11,339.8 | 88.8 | 12.7 | 44.7 | 378.0 | 93.05 | 194 | 5/16-18 UNC-2B |
| 563WS30-CG: | | | | | | | |
| lb/inches | | | | | | | |
| 37,500 | 3.50 | 0.50 | 1.76 | 14.88 | 3.66 | 7.64 | 5/16-18 UNC-2B |
| kg/mm (conversion of above dimensions) | | | | | | | |
| 17,009.7 | 88.8 | 12.7 | 44.7 | 378.0 | 93.05 | 194 | 5/16-18 UNC-2B |

SPECIFICATIONS

| | | | |
|--------------------------|------------------------|--------------------------------------|-------------------------------|
| Full Scale Output | 563WS: 2.0 mV/V ± 1% | Recommended Excitation | 10V (15V Maximum) |
| | 563WS30: 3.0 mV/V ± 1% | | Insulation Resistance |
| Zero Balance | ± 0.02 mV/V | Compensated Temperature Range | -10°C to 50°C / 14°F to 122°F |
| Non-linearity | < ± 0.023% | Safe Overload | 150% of full scale |
| Repeatability | < ± 0.023% | Breaking Overload | 300% of full scale |
| Hysteresis Error | < ± 0.023% | Seal Type / IP Rating | Environmentally Sealed / IP67 |
| Creep in 30 min. | < ± 0.030% | Cable Color Code | Exc+ Red Exc- Black |
| Input Resistance | 350 Ω ± 7 | | Sig+ Green Sig- White |
| Output Resistance | 350 Ω ± 3 | | Shield Bare |
| Element Material | 2Cr13 Stainless Steel | | |

| Rated Capacity | Part Number | Weight (kg) Approx. | INTERCHANGEABLE PRODUCTS | | | |
|----------------|-----------------------|---------------------|--------------------------|----------------------|--------------------|---------------------|
| | | | Avery Weigh-Tronix | Coti-Global | Rice Lake | Rice Lake |
| 1.25Klb | 563WS-1.25Klb-YZ | 2.2 | Weigh Bar | CG-WB-SS-1.25Klb | RL75000 SS-1.25Klb | RL32011WB-L-1.25Klb |
| 2.5Klb | 563WS-2.5Klb-YZ | 3.0 | Weigh Bar | CG-WB-SS-2.5Klb | RL75000 SS-2.5Klb | RL32011WB-L-2.5Klb |
| 5Klb | 563WS-5Klb-YZ | 6.0 | Weigh Bar | CG-WB-SS-5Klb | RL75000 SS-5Klb | RL32011WB-L-5Klb |
| 10Klb | 563WS-10Klb-YZ | 7.0 | Weigh Bar | CG-WB-SS-10Klb | | RL32011WB-L-10Klb |
| 25Klb | 563WS-25Klb-YZ | 15.5 | Weigh Bar | | | |
| 25Klb | 563WS-25Klb-YZ-CG | 15.5 | Weigh Bar | CG-WB-SS-25Klb | | |
| 37.5Klb | 563WS30-37.5Klb-YZ-CG | 18.5 | Weigh Bar | CG-WB-SS-37.5Klb | | |
| 37.5Klb | 563WS30-37.5Klb-YZ | 18.5 | Weigh Bar | | | |
| 50Klb | 563WS30-50Klb-YZ | 21.0 | Weigh Bar | CG-WB-SS-50Klb-50104 | | |