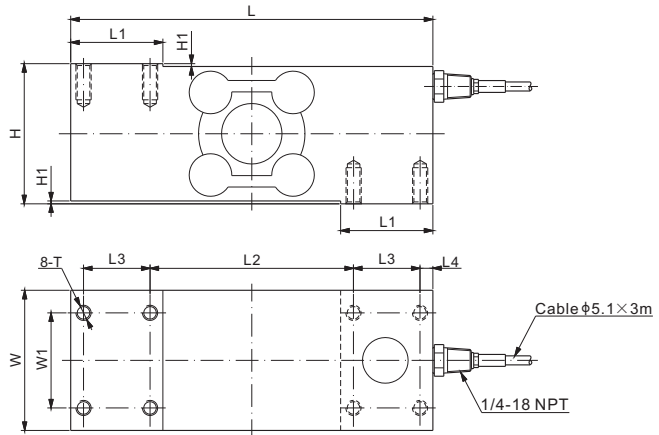


# 651KSBC; 651KSBCUN



## Stainless Steel



### DIMENSIONS

| RATED CAPACITY   | H    | H1   | L     | L1   | L2    | L3   | L4   | W    | W1   | T                     |
|--|------|------|-------|------|-------|------|------|------|------|-----------------------|
| <b>651KSBC:</b><br>kg/mm<br>100-250                              | 73.7 | 1.50 | 190.5 | 48.5 | 107.0 | 35.0 | 6.75 | 73.7 | 50.0 | M8 Depth19.0          |
| <b>lb/inches</b> (conversion of above dimensions)<br>220.2-551.2 | 2.90 | 0.06 | 7.50  | 1.91 | 4.21  | 1.38 | 0.27 | 2.90 | 1.97 | M8 Depth0.75          |
| <b>651KSBCUN:</b><br>kg/mm<br>100-250                            | 73.7 | 1.50 | 190.5 | 48.5 | 107.0 | 35.0 | 6.75 | 73.7 | 50.0 | 5/16-18 UNC Depth19.0 |
| <b>lb/inches</b> (conversion of above dimensions)<br>220.5-551.2 | 2.90 | 0.06 | 7.50  | 1.91 | 4.21  | 1.38 | 0.27 | 2.90 | 1.97 | 5/16-18 UNC Depth0.75 |

### SPECIFICATIONS

|                          |                        |                                      |   |
|--------------------------|------------------------|--------------------------------------|---|
| <b>Full Scale Output</b> | 2.0 mV/V ± 0.25%       | <b>Recommended Excitation</b>        | 10V (15V Maximum)   |
| <b>Zero Balance</b>      | ± 0.02 mV/V            | <b>Reference Max. Platform Size</b>  | 800×800 mm  |
| <b>Non-linearity</b>     | < ± 0.03%              | <b>Insulation Resistance</b>         | >2 [ 50V DC ] GΩ  |
| <b>Repeatability</b>     | < ± 0.02%              | <b>Compensated Temperature Range</b> | -10°C to 50°C / 14°F to 122°F                                     |
| <b>Hysteresis Error</b>  | < ± 0.03%              | <b>Safe Overload</b>                 | 150% of full scale  |
| <b>Creep in 30 min.</b>  | < ± 0.03%              | <b>Breaking Overload</b>             | 300% of full scale  |
| <b>Input Resistance</b>  | 1100 Ω ± 50            | <b>Seal Type / IP Rating</b>         | Welded Seal / IP68/IP69K  |
| <b>Output Resistance</b> | 960 Ω ± 50             | <b>Cable Color Code</b>              | Exc+ Red    Exc- Black<br>Sig+ Green    Sig- White    Shield Bare |
| <b>Element Material</b>  | 17-4PH Stainless Steel |                                      |   |

### PART NUMBER

| Rated Capacity | Part No.             | Weight (kg) Approx. |
|----------------|----------------------|---------------------|
| 100kg.....     | 651KSBC-100kg.....   | 6.2                 |
|                | 651KSBCUN-100kg..... | 6.2                 |
| 250kg.....     | 651KSBC-250kg.....   | 6.3                 |
|                | 651KSBCUN-250kg..... | 6.3                 |

NTEP 1:5 000 Class III, Single Cell

100kg: OIML MAA C9, Y=18 000;  
250kg: OIML MAA C4, Y=26 000

### INTERCHANGEABLE PRODUCTS

| Manufacturer     | Model     |
|------------------|-----------|
| <b>651KSBC</b>   |           |
| Flintec.....     | PCB*      |
| <b>651KSBCUN</b> |           |
| Flintec.....     | PCB*      |
| Rice Lake.....   | RLPCBC-60 |

\* Flintec PCB has 3 versions: PCB, PCBB, PCBC.  
Anyload's 651KSBC is interchangeable with PCBC metric thread, 651KSBCUN PCBC imperial thread.