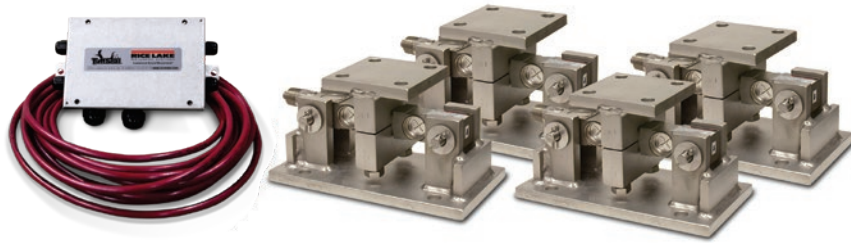


RL1600 HE

Medium-capacity Weigh Modules



Picture is a representation of actual product.

Complete Kit Includes

- Three or four RL1600 HE stainless steel compression mounts with RL75016WHE stainless steel, hermetically sealed double-ended shear beam load cells
- One JB4SS NEMA Type 4X stainless steel signal trim junction box
- 25 ft of our hostile environment EL147HE SURVIVOR load cell cable

Standard Features

- All stainless steel construction
- Self-checking, easy-to-use design allows module to be bolted directly to tank leg without requiring additional mounting plates or load buttons
- Center loaded

Applications

- Medium-capacity tanks, bins and hoppers
- Bulk material management
- Ingredient batching, mixing and blending

Load Cell Approvals



Order Information

Load Rating (Per Module)	Part #	Price
Single Mount Does Not Include Load Cells		
1,000 to 5,000 lb	17813	Consult
10,000 to 25,000 lb	17815	Consult
3-Module Kit		
1,000 lb	46723	Consult
1,500 lb	119673	Consult
2,000 lb	119675	Consult
2,500 lb	46724	Consult
5,000 lb	46725	Consult
10,000 lb	46726	Consult
15,000 lb	46727	Consult
20,000 lb	84664	Consult
25,000 lb	46728	Consult
4-Module Kit		
1,000 lb	46729	Consult
1,500 lb	119674	Consult
2,000 lb	119676	Consult
2,500 lb	46730	Consult
5,000 lb	46731	Consult
10,000 lb	46732	Consult
15,000 lb	46733	Consult
20,000 lb	84665	Consult
25,000 lb	46734	Consult
Dummy Load Cells (Mild Steel)		
1,000 to 5,000 lb	18236	Consult
10,000 to 25,000 lb	18237	Consult

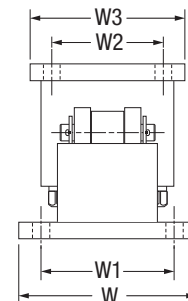
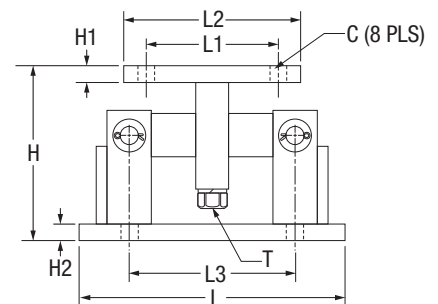
Shims*

Part #	Price
1,000 lb to 5,000 lb	
0.0625	150852
0.125	150853
0.250	150854
10,000 lb to 25,000 lb	
0.0625	150855
0.125	150856
0.250	150857

*Shims match the top plate

Dimensions

Rated Capacity	C	H	H1	H2	L	L1	L2	L3	T	W	W1	W2	W3
1,000 to 5,000	0.56	5.00	0.50	0.50	9.25	2.75	4.00	6.25	1/2-13 UNC	5.00	3.75	2.75	4.00
10,000 to 25,000	0.78	7.87	0.75	0.75	12.00	6.00	8.00	7.50	3/4-10 UNC	8.00	6.00	6.00	8.00



SURVIVOR WEIGH MODULES