

# 1280 FlexWeigh Systems

## Concrete Batcher



**RICE LAKE**<sup>®</sup>  
WEIGHING SYSTEMS

800-472-6703

[www.ricelake.com](http://www.ricelake.com)

# 1280 Flexweigh Concrete Batch Controller

The powerful 1280 Enterprise™ Series indicator creates an easy-to-configure concrete batching system for small or portable concrete plants

The 1280 FlexWeigh concrete batching system increases efficiency and operator control in concrete mixing plants. Operators can easily monitor material levels for multiple hoppers, and manually edit material amounts and moisture compensation for complete and instantaneous batching control.

## Advanced Control

The 1280's color touchscreen display makes it easy for operators to monitor material levels and access records for hundreds of mixes, customers and tickets. Store up to 1,000 mix recipes and 500 customers that can be edited or deleted at any time. Up to 1,000 transaction tickets are stored and can be reprinted at any point in the future.

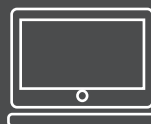
The 1280 FlexWeigh also has multi-language operation to provide flexibility and easy use to a variety of teams. Standard programming offers English as the primary language and Spanish as the secondary language, though any language can be programmed and used for operation.

The 1280 has a built-in web server to provide remote access through network devices such as computers and tablets. This can simplify systems integration and give operators easier access to data.





#### REMOTE FROM A PC OR TABLET



- Run Batching Processes
- Prepare Future Mixes
- Review Reports



#### FROM THE 12 INCH COLOR TOUCHSCREEN OR FRONT-PANEL SWITCHES, OPERATORS CAN MONITOR AND CONTROL:

- Up to three aggregate hopper scales
- Two cement hopper scales
- Four admix bins
- Metered water

## Easy Operation

Operators can select preset mix recipes for batches, manually enter any moisture compensation and press Start to initiate batching. The 1280 FlexWeigh can be quickly switched from automatic to manual batching, allowing operators to use front-panel switches to jog material discharge. The background color of the display is gray when the 1280 FlexWeigh is in manual mode and white in automatic mode so operators can easily distinguish modes.

When preparing a batch in automatic mode, the 1280 FlexWeigh provides prompts to ensure batching is accurate. Operators will see prompts in place of the Start icon if a batch recipe needs to be selected, if Emergency Stop is engaged and for additional settings that could prevent a successful batch.

The 1280 FlexWeigh can be configured to control up to five different scales during concrete batching routines. The number of scales used for a batch is easily configured to match the setup of each plant.



**Portable Usage**  
TRUCK BATCHING OPTIONS AVAILABLE



# 1280 FlexWeigh Systems

CONCRETE BATCHER

## Digital Input and Output

The 1280 FlexWeigh has up to 48 DIO to accommodate the unique configuration of each plant. There is also a digital I/O test menu that simplifies plant setup and can be used for system troubleshooting.

### 1280 FLEXWEIGH HARDWARE

- The 1280 FlexWeigh enclosure is constructed of painted, mild steel with an IP66 rating.
- The 12-inch color touchscreen provides access to all setup menus and controls for automatic batching.
- The front panel has an Emergency Stop switch and additional switches that can be configured to control discharge for aggregates, cement, water and admixes.

Front Panel Switches		
Auto/Manual	Bin 3*	Admix 1*
E-Stop	Cement 1*	Admix 2*
Conveyor Start/Run*	Cement 2*	Admix 3*
Bin 1*	Water*	Admix 4*
Bin 2*		

\* Available in Manual Mode

Inputs		
Admixture 1 Bottle Empty	Admixture 3 Pulse	Air Pressure OK
Admixture 1 Pulse	Admixture 4 Bottle Empty	E-Stop
Admixture 2 Bottle Empty	Admixture 4 Pulse	Water Meter Pulse
Admixture 2 Pulse	Manual Mode	Conveyor Running
Admixture 3 Bottle Empty		

Outputs		
Conveyor Start/Run	Admixture 3 Fill/Feed	Water Feed
Alarm/Horn	Admixture 3 Discharge	Bin 1 Vibrator
Bin 3 Vibrator	Admixture 4 Fill/Feed	Bin 2 Vibrator
Bin 3 Feed	Admixture 4 Discharge	Cement 1 Air
Admixture 1 Fill/Feed	Bin 1 Feed	Cement 2 Air
Admixture 1 Discharge	Bin 2 Feed	Dust Collector 1
Admixture 2 Fill/Feed	Cement 1 Feed	Dust Collector 2
Admixture 2 Discharge	Cement 2 Feed	

### STANDARD FEATURES

- Powered by 1280 Enterprise Series indicator
- Large 12-in color touchscreen display
- Remote batching through web server integration
- Front panel control switches and Emergency Stop
- Automatic or manual batching modes
- Decumulative plant setup
- Configurable from two to five scales (one to two cement scales, and one to three material bins)
- Up to four admixes (bottled or direct)
- Manual entry of moisture compensation percentage
- Metered water controlled by onboard DI/O
- Import/export databases via USB, Revolution® or Interchange software
- Configurable batch transaction ticket
- Storage for 1,000 transactions, 1,000 mix designs, 500 customers
- Available with English or Spanish operation and in imperial or metric measurements

### OPTIONS

- Desktop stand
- Sun visor

### SPECIFICATIONS

<b>POWER:</b>	AC voltages: 100-240 VAC; 50-60 Hz Excitation Voltage: 10 ± 0.5 VDC 16 x 350 ohm or 32 x 700 ohm load cells per A/D card
<b>ANALOG SIGNAL INPUT RANGE:</b>	-60 mV to 60 mV
<b>ANALOG SIGNAL SENSITIVITY:</b>	0.3 µV/graduation minimum at 7.5 Hz–120 Hz 1.0 µV/graduation recommended
<b>A/D SAMPLE RATE:</b>	7.5 to 960 Hz, software selectable
<b>RESOLUTION:</b>	Internal: 8 million counts/8,000,000 Display: 1,000,000
<b>SYSTEM LINEARITY:</b>	± 0.01% full scale
<b>COMMUNICATION PORTS:</b>	Port 1 & 2: Full duplex RS-232 with CTS/RTS, RS-422/485 Baud Rate: 1200 to 115200 Port 3: USB 2.0 Device (Micro) USB Host: (2) Type A Connectors max 500 mA Ethernet: Wired 10/100 Auto-MDX Ethernet: Wireless 802.11 b/g/n 2.4GHz
<b>ONBOARD:</b>	Selectable filters: Three stage, Adaptive or Damping Embedded Linux® OS 8 GB eMMC (system use) 1 GB DDR3 RAM 460 MB onboard database (SQLite) storage Up to 32 GB micro SD card
<b>DISPLAY:</b>	Twelve-inch, 1280 x 800 pixel, 1,500 NIT
<b>TEMPERATURE RANGE:</b>	Certified: 14°F to 104°F (-10°C to 40°C) Operating: -4°F to 131°F (-20°C to 55°C)
<b>RATING/MATERIAL:</b>	Painted mild steel enclosure NEMA Type 12; NEMA Type 4; IP66
<b>DIMENSIONS:</b>	20 in x 20 in x 8 in
<b>WARRANTY:</b>	Two-year limited
<b>EMC IMMUNITY:</b>	EN 50082 Part 2 IEC EN 61000-4-2, 3, 4, 5, 6, 8, 11

SALES AND TECHNICAL ASSISTANCE

**RICELAKE**  
WEIGHING SYSTEMS

**HEADQUARTERS**  
230 West Coleman Street  
Rice Lake, Wisconsin 54868 - USA  
Tel: (715) 234 9171 | Fax: (715) 234 6967  
[www.ricelake.com](http://www.ricelake.com)